

KEY FINDINGS:

- In SY14-15, 27.9% of elementary students, 33.3% of middle school and 49.6% of high school students were chronically absent.
- The highest chronic absence rates were among grades 9-12 (range of 44.5%-51.9%) and Kindergarten (37.5%).
- Historically ninth grade has had one of the highest chronic absence rates; however, the excessive absence rate (missing 20% of enrolled days) has shown a 5-year positive trend from a baseline of 36.3% in SY09-10 to 24.5% SY14-15.
- Among PPSD's special populations, EL students had a lower rate of chronic absence than non-ELs by nearly nine percentage points; students with an IEP had a higher rate of chronic absence than students without an IEP by 11 percentage points.

OVERVIEW

The issue of combating chronic absenteeism has gained national as well as local attention. This issue is one focus of the Providence Children and Youth Cabinet (CYC), which has an attendance workgroup dedicated to bringing a collective impact approach to addressing this issue in Providence. Chronic absenteeism is defined as missing 10% or more of school in a year including excused and unexcused absences¹, therefore a student who is chronically absent and enrolled for the entire 180-day school year would miss at least 18 school days. Some of the more prevalent reasons for students missing school are due to physical ailments (particularly asthma and oral health); a lack of understanding the importance of attendance (particularly at the kindergarten level), and avoiding school (feeling unsafe traveling to school, issues with bullies).²

No matter what the reasons, missing school negatively impacts students' academic achievement and likelihood to graduate.² Research indicates that chronic absence negatively impacts literacy development. This finding is particularly notable given that one study found that children not reading proficiently by third grade were four times more likely to dropout.³ Even as early as first grade, student attendance is an indicator of the likelihood to graduate.⁴

The Rhode Island DataHUB produced a data story on chronic absenteeism using Rhode Island data indicating that chronically absent kindergartners were 20 percentage points lower in reading than non-chronically absent students, 25

percentage points lower in mathematics, two times more likely to be retained, two times more likely to be suspended by the end of seventh grade, and more likely to continue being chronically absent.⁵

Balfanz and Byrnes estimate that the national rate of chronic absenteeism is anywhere from 10% – 15%.⁶ They report that in urban school districts up to one-third of students are chronically absent. Given that approximately one-third of Providence students overall and one-half of Providence high school students are chronically absent, coupled with the heightened impact of chronic absence on low-income students, it is imperative that this issue be highlighted and addressed.

Efforts to address chronic absenteeism have been shown to have an impact. In November 2011, the Providence Public School Department (PPSD) began raising awareness about the need to address student chronic absenteeism by hosting a day-long workshop with Hedy Chang, a national leader in the campaign to reduce chronic absenteeism. An in-depth strategy session was held with principals in March 2012 to encourage them to create school-based data teams to address the issue. Since fall 2012, a number of high schools partnered with Get Schooled⁷ and two have won the national competition. Mount Pleasant high school experienced a substantial reduction in its chronic absence rate the year they won, ultimately reaching a low of 42.4% in SY13-14 after three years of substantial improvement.

Since 2011, PPSD has collected and disseminated chronic absenteeism data to various schools and community stakeholders in an effort to highlight this issue. A study in a large urban district revealed that student attendance in the month of September was predictive of likelihood to be chronically absent. Students who were absent fewer than two days were less likely to be chronically absent for the year; students absent two to four times in September were five times more likely to be chronically absent; and those absent five or more times in September were 16 times more likely to be chronically absent for the year.⁸ In SY15-16, absence data will be accessible by each PPSD school throughout the year through a data visualization platform, which could help schools enact an early warning system designed to identify and provide supports to chronically absent students.

PPSD and the CYC attendance workgroup will continue to address the chronic absence issue in SY15-16 by identifying promising practices currently employed by Providence schools as well as practices or programs that have demonstrated evidence of their effectiveness. This includes efforts at Pleasant View elementary school, a full service community school, which has used focus lists in partnership with community providers to identify and respond to student needs. This also includes scaling-up implementation of an evidence-based program, Positive Action, that has been implemented as a result of the Evidence2Success initiative.

PURPOSE

The purpose of this data brief is to provide chronic absenteeism rates for school years 2009-2010 through 2014-2015. Data are presented at the district, school, and grade levels. Comparisons over the six school years are made. The data address the following guiding questions:

1. For each school year, what is the percentage of students who are chronically and excessively absent?
2. Is there a difference in the absenteeism rates over time?

METHODS & DATA

Sample. Students who were enrolled in grades K – 12 in a Providence non-charter school at any point during the school year were included. This includes any student that was enrolled for at least one day and attended for at least one day. Exceptions include students who were enrolled but never showed for at least one day and since SY11-12, students that were physically educated at facilities other than the ‘home’ school as identified by their homeroom in the student information system (e.g., Alternative Learning Plan, Virtual Credit Recovery with dropout status, YouthBuild).

Overall attendance data for the year for each student was used for district level calculations (summed across all schools of attendance). Attendance data for each student at every school attended was used for school calculations (student attendance record assigned only to a school for the period of time when they were enrolled there).

Analyses. Students were assigned an absenteeism level (see definitions below) based on their percentage of days absent for each school year. Frequencies and cross-tabulations were conducted using PASW Statistics 21 (i.e., SPSS) software.

Definitions. For the purpose of the current brief, students fall into one of four mutually exclusive absenteeism groups:

Low	Students who are absent fewer than 5% of the days they are enrolled.
Moderate	Students who are absent 5% to < 10% of the days they are enrolled.
Chronic	Students who are absent 10% to < 20% of the days they are enrolled.
Excessive	Students who are absent at least 20% of the days that they are enrolled.

Because students who are absent at least 10% of the time are at increased risk for negative outcomes, chronic and excessively absent students are reported together for purposes of discussion.

KEY FINDINGS

Graphs and tables are presented in the Appendices. They display rates at all levels of absenteeism (low, moderate, chronic, and excessive). Key findings are highlighted below.

Question 1: Chronic Absence in SY14-15

- In SY14-15, 35.1% of students were chronically or excessively absent across the district.
- Disaggregated by level, 27.9% of elementary students, 33.3% of middle school and 49.6% of high school students were chronically absent.
- In general, elementary schools tend to have lower ‘excessive’ absenteeism rates. Within the elementary level, Kindergarten has the highest excessive rates.
- The lowest chronic absence rates were for 4th and 5th grade (23.0% and 23.9% respectively).
- The highest rates were among grades 9-12 (range of 44.5%-51.9%) and Kindergarten (37.5%).
- Among the four largest racial subgroups in Providence Public Schools, White students had the highest rate of chronic absenteeism (37.6%) and Asian students the lowest (28.6%).
- Among PPSD’s special populations, EL students had a lower rate of chronic absence than non-ELs by approximately nine percentage points; students with an IEP had a higher rate of chronic absence than students without an IEP by 11 percentage points.

The top and bottom quartile of schools for chronic absence rates are listed in Appendix C. Schools with notable chronic absence rates include:

- Leviton Dual Language elementary school continues to have the best chronic absence rate at 13.9%.

- West Broadway middle school in its first year being open had a rate of 20.8% while Esek Hopkins had the highest at 40.7% among middle schools.
- Among high schools, Classical had the lowest rate at 27.1% while Hope had the highest at 60.9%.

Question 2: Differences in Chronic Absence Rate over Time

- The chronic absenteeism rate rose to 35.1% in SY14-15, an increase of 4.1 percentage points over SY13-14 (30.7%) and a departure from the minimal improvement made during the previous three years. This may be due to a change in student information systems, seven weather related school cancellations due to significant snow accumulations, and/or the school year ending later than is typical due to weather related make-ups.
- Ninth grade has historically had one of the highest chronic absence rates, however, the excessive absence rate has shown a 5-year positive trend from a baseline of 36.3% in SY09-10 to 24.5% SY14-15.
- There was a 10 percentage point drop from SY13-14 to SY14-15 in 10th graders with low chronic absence.
- Despite the district-wide increase in chronic absence, Alvarez high school had the largest reduction from SY13-14 to SY14-15 at 6.6 percentage points. George West (5.3), Young-Woods (4.7), and Pleasant View (1.8) elementary schools had the next highest reductions.

NEXT STEPS

This report highlights the magnitude of the chronic absenteeism issue in Providence's schools. Based on the key findings, reducing chronic absence rates should remain a priority area for PPSD and the CYC. In partnership with the CYC, PPSD should promote the implementation of strong data teams and monitoring processes in schools while raising awareness among parents and the community about the importance and long-term implications of attending school every day, beginning in Kindergarten.

LIMITATIONS

To date, efforts to reduce chronic absence have not been consistently monitored or evaluated. Observed differences between the school years may be due to cohort fluctuations, data collection methods, or chance, which should be considered when drawing inferences or conclusions. For example, data collection of attendance should be uniform across schools. In SY11-12 a systematic change in the method for inputting attendance data at the high school level was implemented. The 7.1 percentage point decrease in chronic absence at the high school level from SY10-11 to SY11-12 may

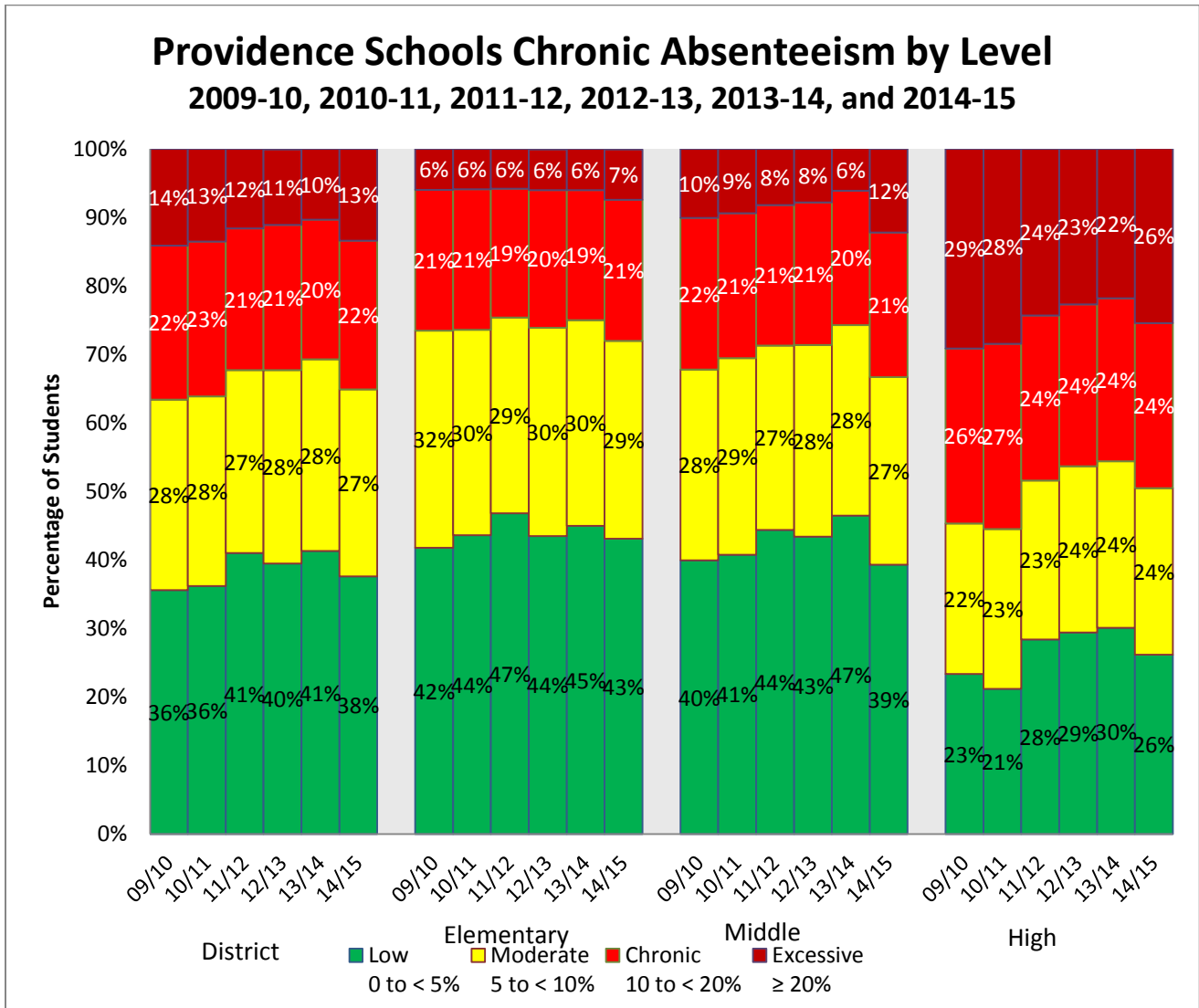
be the result of more accurate data collection and/or it could indicate improvement based on intentional efforts.

The implementation of the new student information system in SY14-15 was an opportunity to provide clear guidelines for collecting data at all Providence schools; however, challenges with the implementation of the new system may have impacted the rates (Esek Hopkins middle school may be an example). Results from SY15-16 may provide further insight into whether the increase was due to a change in systems and collection methods.

REFERENCES

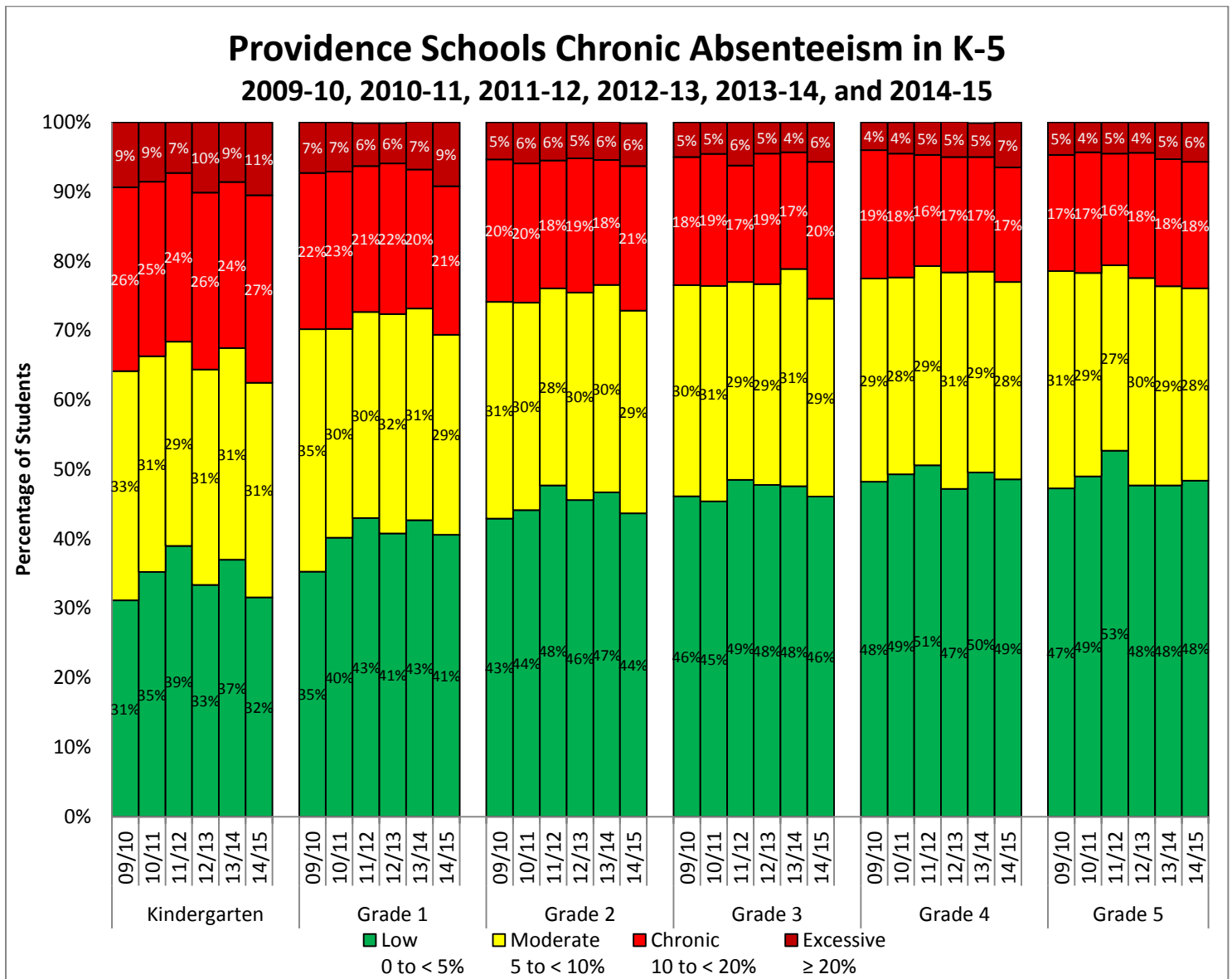
1. Chang, H. (December, 2011). *Reducing the achievement gap and school drop out: The imperative for reducing chronic absence starting with school entry*. Invited presentation to Providence Public Schools.
2. *Mapping the Early Attendance Gap: Charting a Course for Student Success*. Attendance Works & Healthy Schools Campaign, September 2015.
3. Hernandez, D. A., *Double Jeopardy: How Third-Grade Reading Skills and Poverty Influence High School Graduation*. Annie E. Casey Foundation, April 2012.
4. Schoeneberger, J. A. (2011). Longitudinal Attendance Patterns: Developing High School Dropouts. *The Clearing House: A Journal of Educational Strategies, Issues and Ideas*, 85(1), 7-14.
5. Accessed online at: <http://ridatahub.org/datastories/chronic-absenteeism-in-kindergarten/2/>
6. Balfanz, R., & Byrnes, V. (2012). *Chronic Absenteeism: Summarizing What We Know From Nationally Available Data*. Baltimore: Johns Hopkins University Center for Social Organization of Schools.
7. Get Schooled is a non-profit organization that uses media to encourage student attendance. Website: <https://getschooled.com/>
8. Olson, L. S. (2014). *Why September Matters: Improving Student Attendance*. Baltimore Education Research Consortium Policy Brief.

Appendix A: Graph of Chronic Absenteeism by School Level



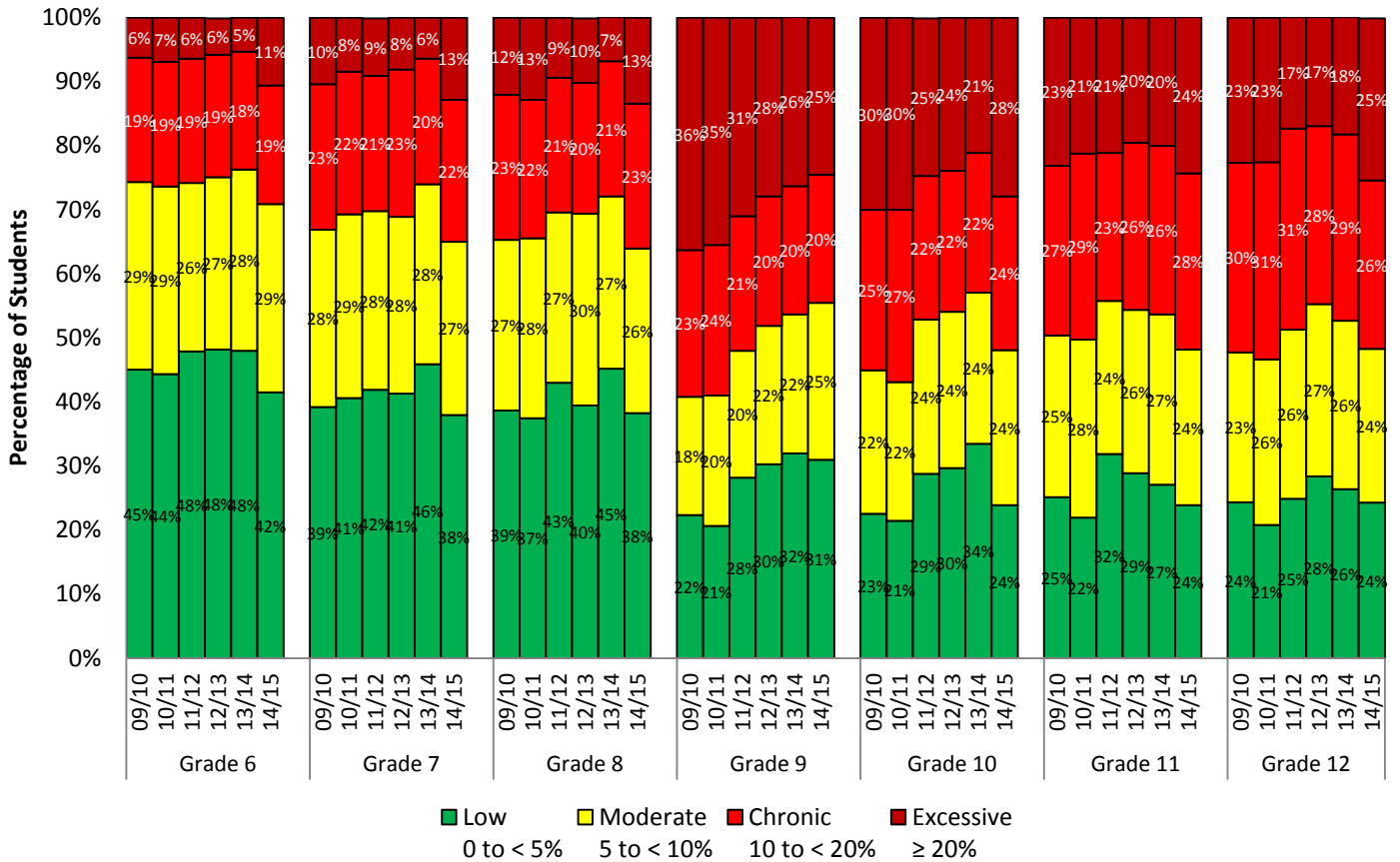
Note: Data reflects students who were ever enrolled in a PPSD non-charter school in grades K – 12 during that school year. Beginning in SY11-12, students that were physically educated at facilities other than the ‘home’ school, as identified by their homeroom in the student information system, were removed from the chronic absence calculations for both district and school levels. For the district and level calculations, overall attendance behavior for each student was used.

Appendix B: Graph of Chronic Absenteeism by Grade



Note: Data reflects students who were ever enrolled in a PPSD non-charter school in grades K – 12 during that school year. Beginning in SY11-12, students that were physically educated at facilities other than the 'home' school, as identified by their homeroom in the student information system, were removed from the chronic absence calculations for both district and school levels. For the grade level calculations, overall attendance behavior for each student was used.

Providence Schools Chronic Absenteeism in MS & HS 2009-10, 2010-11, 2011-12, 2012-13, 2013-14, and 2014-15



Note: Data reflects students who were ever enrolled in a PPSD non-charter school in grades K – 12 during that school year. Beginning in SY11-12, students that were physically educated at facilities other than the ‘home’ school, as identified by their homeroom in the student information system, were removed from the chronic absence calculations for both district and school levels. For the grade level calculations, overall attendance behavior for each student was used.

Appendix C: Chronic and Excessive Absenteeism Rates for Providence Schools

Table 1. Chronic and excessive absenteeism rates by school SY10-11 through SY14-15.

Elementary Schools	SY10-11	SY11-12	SY12-13	SY13-14	SY14-15
ALFRED LIMA	19.8%	24.1%	26.6%	24.1%	29.2%
ANTHONY CARNEVALE	18.0%	24.4%	24.0%	26.9%	29.2%
ASA MESSER ELEM	29.2%	27.6%	28.5%	25.0%	30.6%
CARL G LAURO	32.2%	31.3%	32.2%	30.4%	31.2%
CHARLES FORTES*	23.3%	30.8%	41.8%	35.8%	39.3%
FEINSTEIN (BROAD)	21.8%	23.5%	28.0%	23.7%	28.0%
FEINSTEIN (SACKETT)	27.5%	25.2%	22.8%	24.9%	28.0%
FRANK SPAZIANO	21.1%	18.0%	17.0%	18.4%	23.3%
GEORGE J WEST	22.6%	27.5%	26.3%	31.2%	25.9%
HARRY KIZIRIAN	36.3%	31.4%	34.4%	28.0%	34.8%
LEVITON DUAL LANG	NA	NA	7.9%	12.6%	13.9%
MARTIN LUTHER KING	29.6%	25.6%	27.2%	27.0%	33.5%
MARY E FOGARTY	29.7%	32.5%	27.0%	31.9%	31.1%
PLEASANT VIEW	36.1%	32.5%	29.4%	32.4%	30.6%
RESERVOIR AVENUE	22.0%	16.6%	17.4%	13.5%	16.9%
ROBERT F KENNEDY	15.6%	15.9%	22.2%	21.8%	22.9%
ROBERT L BAILEY	32.4%	28.7%	31.2%	30.4%	33.7%
VARTAN GREGORIAN	20.6%	14.1%	13.9%	14.4%	22.7%
VEAZIE STREET	34.9%	34.9%	33.4%	32.1%	32.6%
WEBSTER AVENUE	26.2%	19.7%	26.5%	20.2%	25.8%
WILLIAM DABATE MEMOR	22.9%	20.8%	17.6%	15.9%	17.1%
WOODS & YOUNG ELEM	38.2%	33.8%	36.9%	31.5%	26.8%
Middle Schools	SY10-11	SY11-12	SY12-13	SY13-14	SY14-15
DELSESTO MIDDLE	36.1%	37.6%	39.5%	37.1%	37.3%
ESEK HOPKINS	38.8%	36.2%	35.0%	38.2%	40.7%
GILBERT STUART	34.8%	37.6%	33.1%	32.5%	32.4%
NATHAN BISHOP	25.8%	26.1%	24.7%	22.8%	30.9%
NATHANAEL GREENE	29.8%	24.7%	28.6%	24.4%	32.3%
ROGER WILLIAMS	42.9%	42.4%	34.0%	32.4%	36.6%
WEST BROADWAY	NA	NA	NA	NA	20.8%
High Schools	SY10-11	SY11-12	SY12-13	SY13-14	SY14-15
CENTRAL	61.8%	58.8%	61.7%	60.4%	60.4%
CLASSICAL	22.5%	19.4%	19.3%	21.4%	27.1%
E-CUBED ACADEMY	57.8%	43.9%	50.0%	45.1%	46.4%
HOPE HIGH	61.3%	61.3%	56.8%	57.8%	60.9%
HSTA & PAIS HIGH	64.8%	52.0%	49.4%	53.7%	53.1%
JORGE ALVAREZ HIGH	67.5%	64.9%	57.9%	55.9%	49.0%
MOUNT PLEASANT HIGH	69.4%	58.7%	49.3%	42.4%	47.5%
PROV CAREER AND TECH	60.3%	43.6%	47.4%	47.0%	50.8%

Note: Cells highlighted in the color green represent the top quartile for that level while the color red represents the bottom quartile.

*Charles Fortes elementary school has a grade span of pre-kindergarten to grade 1. Considering the district-wide kindergarten rates, the higher than average chronic absence rate for this school in comparison to other district elementary schools is likely due to its grade structure.

Appendix D: Absenteeism Rates for Providence Schools, SY10-11

Table 1d. Absenteeism rates by school level and grade (2010-2011).

School/Level/Grade	Total Enrollment*	Low 0 to < 5%	Moderate 5 to < 10%	Chronic 10 to < 20%	Excessive ≥ 20%
	N	%	%	%	%
DISTRICT	24,191	36.2%	27.7%	22.6%	13.5%
ELEMENTARY	11,792	43.6%	30.0%	20.5%	5.9%
MIDDLE	5,014	40.8%	28.7%	21.2%	9.4%
HIGH	7,385	21.2%	23.3%	27.1%	28.4%
Kindergarten	2,045	35.3%	31.1%	25.1%	8.6%
Grade 1	2,147	40.2%	30.0%	22.7%	7.1%
Grade 2	2,052	44.2%	29.9%	20.1%	5.9%
Grade 3	1,944	45.4%	31.0%	19.0%	4.5%
Grade 4	1,916	49.3%	28.3%	17.8%	4.5%
Grade 5	1,688	49.0%	29.3%	17.4%	4.3%
Grade 6	1,598	44.4%	29.3%	19.5%	6.9%
Grade 7	1,772	40.6%	28.7%	22.3%	8.4%
Grade 8	1,644	37.5%	28.1%	21.6%	12.8%
Grade 9	2,380	20.7%	20.3%	23.5%	35.5%
Grade 10	1,988	21.5%	21.6%	26.9%	30.0%
Grade 11	1,499	21.9%	27.8%	29.0%	21.2%
Grade 12	1,518	20.8%	25.8%	30.8%	22.5%

*Data reflects students who were ever enrolled in a PPSD non-charter school in grades K - 12 during SY10-11. For the district and level calculations, overall attendance behavior for each student was used. For school-level calculations, student attendance behavior per school of attendance was used. Students who were enrolled but never showed were deleted from calculations.

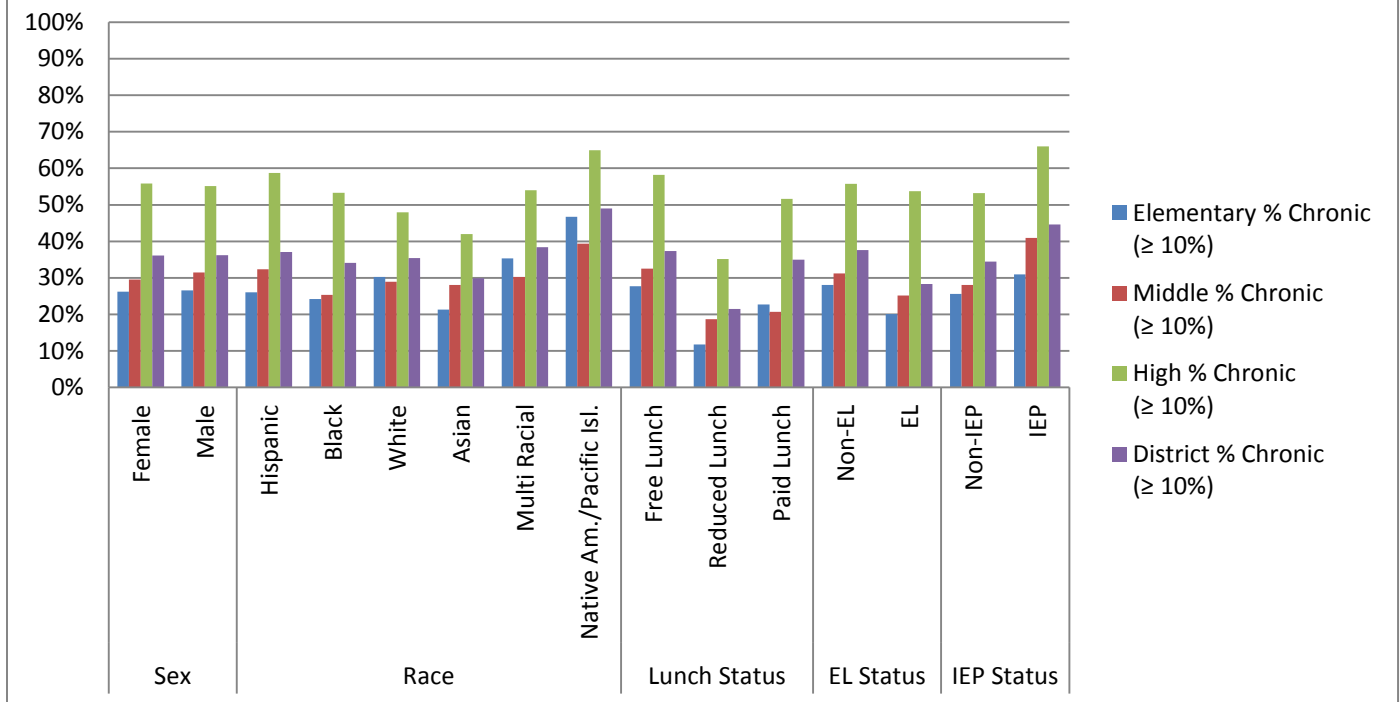
Table 2d. Absenteeism rates by school (2010-2011).

School/Level/Grade	Total Enrollment*	Low 0 to < 5%	Moderate 5 to < 10%	Chronic 10 to < 20%	Excessive ≥ 20%
	N	%	%	%	%
ALFRED LIMA	271	56.1%	31.0%	10.3%	2.6%
ALFRED LIMA ANNEX	221	34.8%	38.0%	20.8%	6.3%
ANTHONY CARNEVALE	478	51.3%	30.8%	14.4%	3.6%
ASA MESSER	295	48.8%	27.1%	18.3%	5.8%
ASA MESSER ANNEX	177	41.8%	26.6%	19.8%	11.9%
BIRCH VOCATIONAL	83	79.5%	13.3%	2.4%	4.8%
CARL G LAURO	906	40.1%	27.7%	23.5%	8.7%
CENTRAL	1,326	14.6%	23.5%	25.3%	36.6%
CHARLES FORTES	400	43.8%	33.3%	17.5%	5.5%
CHARLES FORTES ANNEX	166	41.0%	25.9%	27.7%	5.4%
CLASSICAL	1,069	46.9%	30.6%	18.2%	4.3%
CORNEL YOUNG, JR.	313	34.5%	29.7%	27.8%	8.0%
DELSESTO MIDDLE	540	32.2%	31.7%	22.0%	14.1%
E-CUBED ACADEMY	436	17.9%	24.3%	27.1%	30.7%
EDMUND FLYNN	616	40.1%	29.1%	22.9%	8.0%
ESEK HOPKINS	577	31.9%	29.3%	24.1%	14.7%
FEINSTEIN (BROAD)	418	45.2%	33.0%	16.7%	5.0%
FEINSTEIN (SACKETT)	520	42.9%	29.6%	17.9%	9.6%
FRANK SPAZIANO ELEM & ANNEX	626	50.5%	28.4%	16.5%	4.6%
GEORGE J WEST	725	49.9%	27.4%	18.5%	4.1%
GILBERT STUART	911	41.8%	23.4%	19.1%	15.7%
HARRY KIZIRIAN	637	31.6%	32.2%	25.4%	10.8%
HOPE-ARTS	726	19.7%	19.0%	27.1%	34.2%
HOPE-TECHNOLOGY	650	14.3%	17.2%	27.5%	40.9%
HSTA & PAIS HIGH	457	17.1%	18.2%	31.7%	33.0%
JORGE ALVAREZ HIGH	695	12.9%	19.6%	30.9%	36.5%
MARTIN LUTHER KING	507	40.4%	30.0%	21.7%	7.9%
MARY E FOGARTY	508	39.2%	31.1%	22.4%	7.3%
MOUNT PLEASANT HIGH	1,322	10.7%	19.9%	26.9%	42.6%
NATHAN BISHOP	569	44.6%	29.5%	16.2%	9.7%
NATHANAEL GREENE	919	43.4%	26.8%	22.0%	7.8%
PLEASANT VIEW	349	37.2%	26.6%	25.2%	10.9%
PROV ACAD INT STUDY	445	20.7%	21.1%	32.6%	25.6%
PROV CAREER AND TECH	461	20.4%	19.3%	33.2%	27.1%
RESERVOIR AVENUE	328	46.3%	31.7%	17.1%	4.9%
ROBERT F KENNEDY	557	56.4%	28.0%	12.7%	2.9%
ROBERT L BAILEY	472	36.0%	31.6%	22.9%	9.5%
ROGER WILLIAMS	856	28.5%	28.6%	28.7%	14.1%
SAMUEL W BRIDGHAM	661	31.2%	25.6%	26.3%	16.9%
VARTAN GREGORIAN	379	53.6%	25.9%	15.3%	5.3%
VEAZIE STREET	607	38.9%	26.2%	26.0%	8.9%
WEBSTER AVENUE	363	51.0%	22.9%	20.4%	5.8%
WEST BROADWAY ELEMEN	500	34.0%	30.4%	28.8%	6.8%
WILLIAM DABATE MEMOR	450	52.7%	24.4%	18.2%	4.7%
WINDMILL STREET ELEM	484	34.9%	29.3%	24.8%	11.0%
WOODS & YOUNG ELEM	364	30.5%	31.3%	24.5%	13.7%

Table 3d. Percentage of students chronically absent by subgroup (2010-2011).

Subgroup		Elementary		Middle		High		District	
		% Chronic (≥ 10%)	N	% Chronic (≥ 10%)	N	% Chronic (≥ 10%)	N	% Chronic (≥ 10%)	N
Sex	Female	26.2%	5,660	29.5%	2,402	55.8%	3,637	36.1%	11,699
	Male	26.6%	6,132	31.5%	2,612	55.1%	3,748	36.2%	12,492
Race	Hispanic	26.1%	7,492	32.3%	3,149	58.7%	4,513	37.1%	15,154
	Black	24.2%	2,121	25.3%	916	53.3%	1,509	34.1%	4,546
	White	30.3%	1,061	28.9%	481	48.0%	692	35.5%	2,234
	Asian	21.3%	605	28.1%	260	42.0%	464	29.9%	1,329
	Multi Racial	35.3%	391	30.3%	142	54.0%	150	38.4%	683
	Native Am./Pacific Isl.	46.7%	122	39.4%	66	64.9%	57	49.0%	245
Males of Color (MBK)	<i>Hispanic & Black male</i>	25.9%	5004	31.9%	2090	56.6%	3064	36.4%	10158
	<i>Hispanic male</i>	26.1%	3,901	34.1%	1,623	57.1%	2,296	36.9%	7820
	<i>Black male</i>	25.2%	1,103	24.2%	467	55.2%	768	34.9%	2338
Lunch Status	Free Lunch	27.7%	10,024	32.5%	4,212	58.2%	5,611	37.4%	19,847
	Reduced Lunch	11.8%	636	18.7%	294	35.2%	509	21.5%	1,439
	Paid Lunch	22.7%	1,132	20.7%	508	51.6%	1,265	34.9%	2,905
EL Status	Non-EL	28.0%	9,367	31.2%	4,469	55.7%	6,530	37.6%	20,366
	EL	20.1%	2,425	25.1%	545	53.7%	855	28.3%	3,825
IEP Status	Non-IEP	25.6%	10,009	28.0%	4,047	53.2%	6,081	34.4%	20,137
	IEP	31.0%	1,783	41.0%	967	66.0%	1,304	44.6%	4,054

Figure 4d. Chronic absence by subgroup 2010-2011.



Appendix E: Absenteeism Rates for Providence Schools, SY11-12

Table 1e. Absenteeism rates by school level and grade (2011-2012).

School/Level/Grade	Total Enrollment*	Low 0 to < 5%	Moderate 5 to < 10%	Chronic 10 to < 20%	Excessive ≥ 20%
	N	%	%	%	%
DISTRICT	24,127	41.0%	26.7%	20.7%	11.6%
ELEMENTARY	12,222	46.8%	28.6%	18.8%	5.8%
MIDDLE	4,994	44.4%	26.9%	20.5%	8.2%
HIGH	6,911	28.4%	23.2%	24.1%	24.3%
Kindergarten	2,112	39.0%	29.4%	24.3%	7.3%
Grade 1	2,081	43.0%	29.7%	21.0%	6.2%
Grade 2	2,112	47.7%	28.4%	18.4%	5.5%
Grade 3	2,061	48.5%	28.5%	16.8%	6.2%
Grade 4	1,937	50.6%	28.7%	16.0%	4.8%
Grade 5	1,919	52.7%	26.7%	16.1%	4.5%
Grade 6	1,748	47.9%	26.3%	19.4%	6.4%
Grade 7	1,493	41.9%	27.9%	21.1%	9.0%
Grade 8	1,753	43.0%	26.6%	21.0%	9.4%
Grade 9	2,161	28.2%	19.8%	21.0%	31.0%
Grade 10	1,769	28.8%	24.1%	22.4%	24.6%
Grade 11	1,429	31.9%	23.9%	23.1%	21.1%
Grade 12	1,552	24.9%	26.4%	31.4%	17.4%

*Data reflects students who were ever enrolled in a PPSD non-charter school in grades K - 12 during SY11-12. Beginning in SY11-12, students that were physically educated at facilities other than the 'home' school, as identified by their homeroom in the student information system, were removed from the chronic absence calculations for both district and school levels. For the district and level calculations, overall attendance behavior for each student was used. For school-level calculations, student attendance behavior per school of attendance was used. Students who were enrolled but never showed were deleted from calculations.

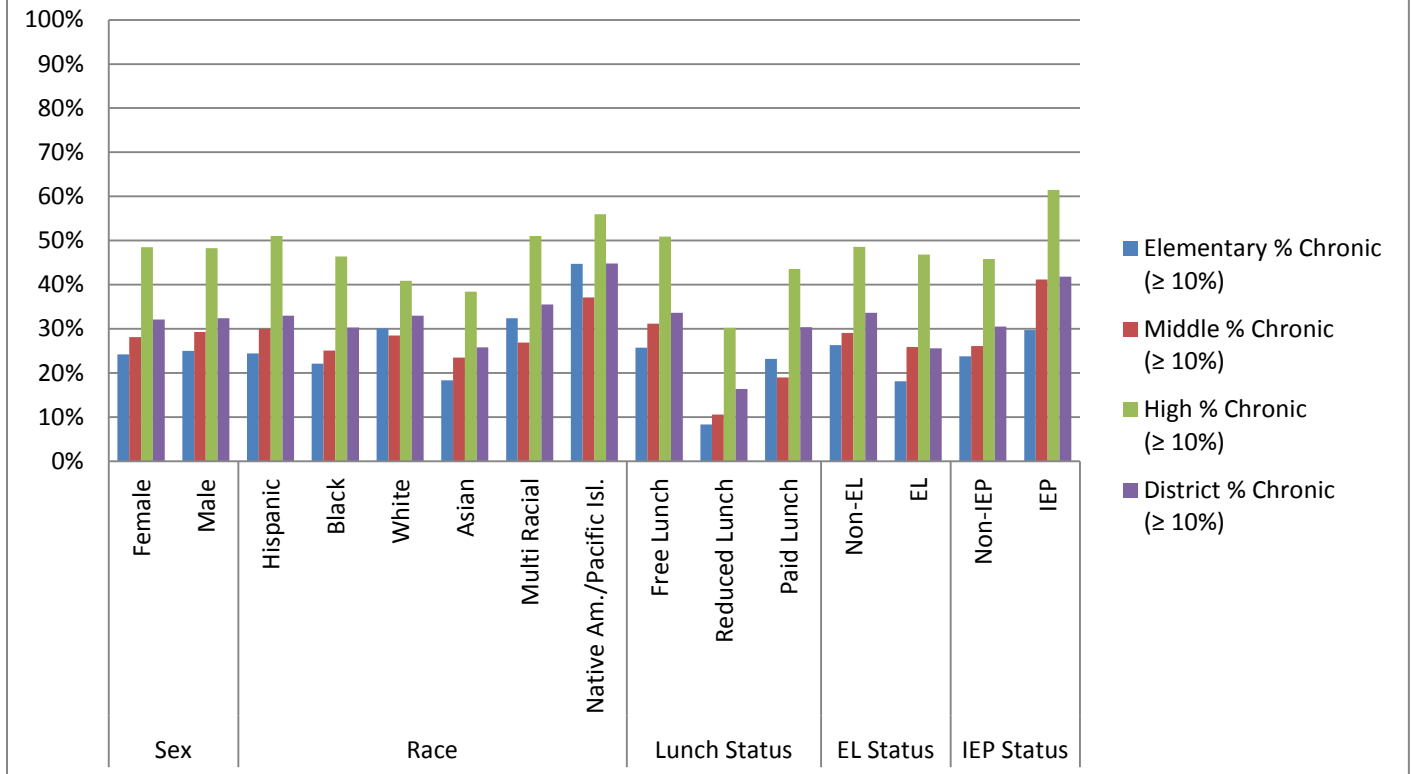
Table 2e. Absenteeism rates by school (2011-2012).

School/Level/Grade	Total Enrollment*	Low 0 to < 5%	Moderate 5 to < 10%	Chronic 10 to < 20%	Excessive ≥ 20%
	N	%	%	%	%
ALFRED LIMA	691	48.5%	27.4%	17.9%	6.2%
ALFRED LIMA ANNEX	271	56.8%	30.3%	9.2%	3.7%
ANTHONY CARNEVALE	658	46.7%	28.9%	17.6%	6.8%
ASA MESSER ELEM	678	44.8%	27.6%	19.8%	7.8%
BIRCH VOCATIONAL	82	51.2%	18.3%	17.1%	13.4%
CARL G LAURO	1,105	42.5%	26.2%	19.4%	11.9%
CENTRAL	1,240	20.6%	20.6%	26.0%	32.8%
CHARLES FORTES	338	40.2%	29.0%	22.5%	8.3%
CLASSICAL	1,113	51.0%	29.6%	14.7%	4.7%
DELSESTO MIDDLE	1,046	37.9%	24.5%	25.5%	12.1%
E-CUBED ACADEMY	415	31.8%	24.3%	21.2%	22.7%
ESEK HOPKINS	638	40.4%	23.4%	21.3%	14.9%
FEINSTEIN (BROAD)	510	44.9%	31.6%	18.8%	4.7%
FEINSTEIN (SACKETT)	508	49.8%	25.0%	20.3%	4.9%
FRANK SPAZIANO	696	55.0%	27.0%	13.8%	4.2%
GEORGE J WEST	860	45.6%	26.9%	20.8%	6.7%
GILBERT STUART	900	36.4%	25.9%	23.4%	14.2%
HARRY KIZIRIAN	743	41.5%	27.2%	21.0%	10.4%
HOPE	1,231	20.4%	18.3%	25.6%	35.7%
HSTA & PAIS HIGH	796	25.8%	22.2%	26.6%	25.4%
JORGE ALVAREZ HIGH	674	15.7%	19.4%	28.5%	36.4%
MARTIN LUTHER KING	647	45.6%	28.7%	21.0%	4.6%
MARY E FOGARTY	564	39.4%	28.2%	22.7%	9.8%
MOUNT PLEASANT HIGH	1,170	20.2%	21.1%	23.5%	35.2%
NATHAN BISHOP	761	46.3%	27.7%	18.7%	7.4%
NATHANAEL GREENE	1,033	45.9%	29.4%	18.2%	6.5%
PLEASANT VIEW	338	37.6%	29.9%	21.6%	10.9%
PROV CAREER AND TECH	516	31.2%	25.2%	26.2%	17.4%
RESERVOIR AVENUE	332	52.1%	31.3%	15.1%	1.5%
ROBERT F KENNEDY	567	52.9%	31.2%	12.7%	3.2%
ROBERT L BAILEY	546	42.3%	28.9%	22.7%	6.0%
ROGER WILLIAMS	910	34.7%	22.9%	26.4%	16.0%
VARTAN GREGORIAN	383	59.5%	26.4%	8.6%	5.5%
VEAZIE STREET	760	38.0%	27.1%	25.3%	9.6%
WEBSTER AVENUE	417	54.7%	25.7%	14.4%	5.3%
WILLIAM DABATE MEMOR	452	57.1%	22.1%	15.7%	5.1%
WOODS & YOUNG ELEM	816	37.1%	29.0%	25.1%	8.7%

Table 3e. Percentage of students chronically absent by subgroup (2011-2012).

Subgroup		Elementary		Middle		High		District	
		% Chronic (≥ 10%)	N	% Chronic (≥ 10%)	N	% Chronic (≥ 10%)	N	% Chronic (≥ 10%)	N
Sex	Female	24.2%	5832	28.1%	2415	48.5%	3402	32.1%	11649
	Male	25.0%	6390	29.3%	2579	48.3%	3509	32.4%	12478
Race	Hispanic	24.4%	7,890	30.0%	3,190	51.0%	4,277	33.0%	15357
	Black	22.1%	2,109	25.1%	904	46.4%	1,352	30.3%	4365
	White	30.1%	1,028	28.5%	473	40.9%	656	33.0%	2157
	Asian	18.3%	650	23.5%	238	38.4%	427	25.8%	1315
	Multi Racial	32.4%	413	26.9%	119	51.0%	149	35.5%	681
	Native Am./Pacific Isl.	44.7%	132	37.1%	70	56.0%	50	44.8%	252
Males of Color (MBK)	Hispanic & Black male	24.1%	5243	29.4%	2078	49.6%	2855	32.3%	10176
	Hispanic male	24.5%	4,144	30.8%	1,625	50.6%	2,191	33.0%	7960
	Black male	22.4%	1,099	24.5%	453	46.4%	664	30.0%	2216
Lunch Status	Free Lunch	25.7%	10,511	31.2%	4,158	50.9%	5,344	33.6%	20013
	Reduced Lunch	8.3%	575	10.6%	274	30.2%	454	16.4%	1303
	Paid Lunch	23.2%	1,136	19.0%	562	43.6%	1,113	30.4%	2811
EL Status	Non-EL	26.3%	9707	29.1%	4330	48.6%	6033	33.6%	20070
	EL	18.1%	2515	25.9%	664	46.8%	878	25.6%	4057
IEP Status	Non-IEP	23.8%	10448	26.1%	4123	45.8%	5793	30.5%	20364
	IEP	29.7%	1774	41.2%	871	61.5%	1118	41.8%	3763

Figure 4e. Chronic absence by subgroup 2011-2012



Appendix F: Absenteeism Rates for Providence Schools, SY12-13

Table 1f. Absenteeism rates by school level and grade (2012-2013).

School/Level/Grade	Total Enrollment*	Low 0 to < 5%	Moderate 5 to < 10%	Chronic 10 to < 20%	Excessive ≥ 20%
	N	%	%	%	%
DISTRICT	24,026	39.5%	28.2%	21.2%	11.0%
ELEMENTARY	12,315	43.5%	30.4%	20.1%	5.9%
MIDDLE	4,950	43.4%	28.0%	20.8%	7.8%
HIGH	6,761	29.4%	24.3%	23.6%	22.7%
Kindergarten	2,216	33.4%	31.0%	25.5%	10.1%
Grade 1	2,157	40.8%	31.6%	21.7%	5.8%
Grade 2	2,045	45.6%	29.9%	19.3%	5.2%
Grade 3	2,040	47.8%	28.9%	18.8%	4.5%
Grade 4	1,957	47.2%	31.2%	16.6%	5.1%
Grade 5	1,900	47.7%	29.9%	18.0%	4.4%
Grade 6	1,879	48.2%	26.9%	19.1%	5.7%
Grade 7	1,627	41.3%	27.6%	23.0%	8.1%
Grade 8	1,444	39.5%	29.9%	20.4%	10.1%
Grade 9	2,148	30.3%	21.6%	20.2%	27.9%
Grade 10	1,676	29.7%	24.4%	22.0%	23.9%
Grade 11	1,492	28.9%	25.5%	26.1%	19.5%
Grade 12	1,445	28.4%	26.9%	27.8%	17.0%

*Data reflects students who were ever enrolled in a PPSD non-charter school in grades K - 12 during SY12-13. Beginning in SY11-12, students that were physically educated at facilities other than the 'home' school, as identified by their homeroom in the student information system, were removed from the chronic absence calculations for both district and school levels. For the district and level calculations, overall attendance behavior for each student was used. For school-level calculations, student attendance behavior per school of attendance was used. Students who were enrolled but never showed were deleted from calculations.

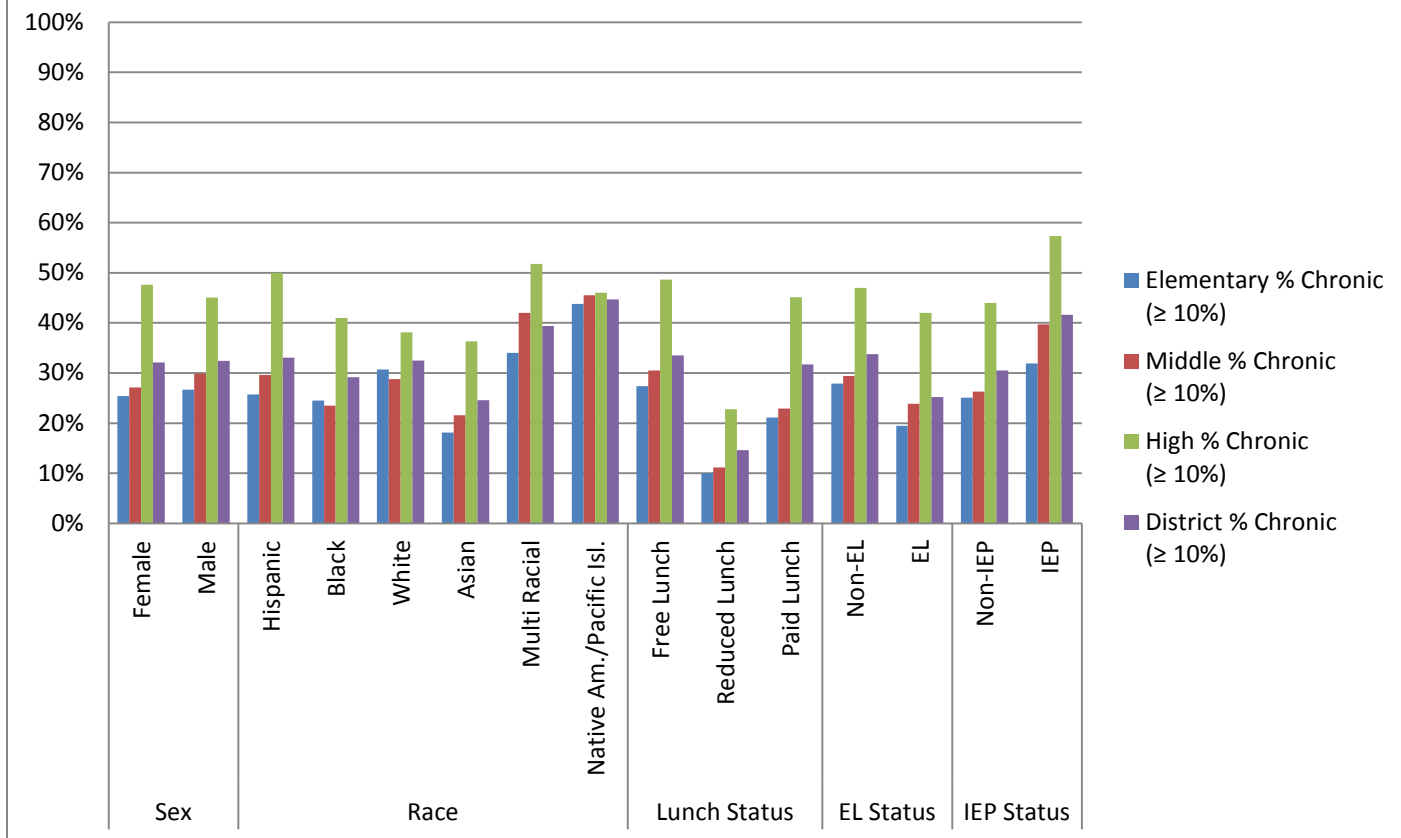
Table 2f. Absenteeism rates by school (2012-2013).

School/Level/Grade	Total Enrollment*	Low 0 to < 5%	Moderate 5 to < 10%	Chronic 10 to < 20%	Excessive ≥ 20%
	N	%	%	%	%
ALFRED LIMA	678	42.8%	30.7%	20.1%	6.5%
ANTHONY CARNEVALE	645	44.8%	31.2%	18.3%	5.7%
ASA MESSER ELEM	697	40.7%	30.7%	21.8%	6.7%
BIRCH VOCATIONAL	97	52.6%	19.6%	20.6%	7.2%
CARL G LAURO	1,061	40.0%	27.8%	21.4%	10.8%
CENTRAL	1,195	17.3%	21.0%	28.7%	33.0%
CHARLES FORTES	402	31.1%	27.1%	24.6%	17.2%
CLASSICAL	1,118	50.8%	29.9%	14.4%	4.9%
DELSESTO MIDDLE	1,053	33.5%	27.0%	25.9%	13.6%
E-CUBED ACADEMY	370	20.3%	29.7%	27.6%	22.4%
ESEK HOPKINS	640	38.4%	26.6%	25.0%	10.0%
FEINSTEIN (BROAD)	513	40.4%	31.6%	22.2%	5.8%
FEINSTEIN (SACKETT)	499	43.5%	33.7%	18.8%	4.0%
FRANK SPAZIANO	721	52.0%	30.9%	13.0%	4.0%
GEORGE J WEST	899	42.4%	31.4%	19.6%	6.7%
GILBERT STUART	828	40.6%	26.3%	22.2%	10.9%
HARRY KIZIRIAN	686	35.0%	30.6%	26.4%	8.0%
HOPE HIGH	1,213	23.3%	19.9%	23.6%	33.2%
HSTA & PAIS HIGH	761	28.6%	21.9%	23.9%	25.5%
JORGE ALVAREZ HIGH	664	21.8%	20.2%	23.9%	34.0%
LEVITON DUAL LANG	279	64.2%	28.0%	5.7%	2.2%
MARTIN LUTHER KING	624	43.6%	29.2%	20.8%	6.4%
MARY E FOGARTY	545	41.8%	31.2%	19.8%	7.2%
MOUNT PLEASANT HIGH	1,052	29.4%	21.4%	23.6%	25.7%
NATHAN BISHOP	752	47.6%	27.7%	15.0%	9.7%
NATHANAEL GREENE	1,052	45.2%	26.2%	20.3%	8.3%
PLEASANT VIEW	336	40.2%	30.4%	22.3%	7.1%
PROV CAREER AND TECH	587	27.8%	24.9%	25.6%	21.8%
RESERVOIR AVENUE	333	50.2%	32.4%	14.7%	2.7%
ROBERT F KENNEDY	564	48.0%	29.8%	18.1%	4.1%
ROBERT L BAILEY	539	37.3%	31.5%	25.4%	5.8%
ROGER WILLIAMS	852	36.6%	29.3%	21.8%	12.2%
VARTAN GREGORIAN	397	55.7%	30.5%	9.6%	4.3%
VEAZIE STREET	724	37.2%	29.4%	24.3%	9.1%
WEBSTER AVENUE	427	45.9%	27.6%	20.4%	6.1%
WILLIAM DABATE MEMOR	436	54.4%	28.0%	14.4%	3.2%
WOODS & YOUNG ELEM	839	34.9%	28.2%	25.9%	11.0%

Table 3f. Percentage of students chronically absent by subgroup (2012-2013).

Subgroup		Elementary		Middle		High		District	
		% Chronic (≥ 10%)	N	% Chronic (≥ 10%)	N	% Chronic (≥ 10%)	N	% Chronic (≥ 10%)	N
Sex	Female	25.4%	5919	27.1%	2,346	47.6%	3,314	32.1%	11,579
	Male	26.7%	6396	29.9%	2,604	45.1%	3,447	32.4%	12,447
Race	Hispanic	25.7%	8,039	29.6%	3,194	50.0%	4,206	33.1%	15,439
	Black	24.5%	2,067	23.5%	908	41.0%	1,284	29.2%	4,259
	White	30.7%	1,014	28.8%	444	38.1%	636	32.5%	2,094
	Asian	18.1%	620	21.6%	218	36.3%	408	24.6%	1,246
	Multi Racial	34.0%	447	42.0%	131	51.8%	164	39.4%	742
	Native Am./Pacific Isl.	43.8%	128	45.5%	55	46.0%	63	44.7%	246
Males of Color (MBK)	Hispanic & Black male	26.1%	5268	29.7%	2128	46.5%	2789	32.4%	10185
	Hispanic male	26.4%	4,184	31.3%	1,673	48.5%	2,151	33.3%	8008
	Black male	25.2%	1,084	23.7%	455	39.8%	638	29.2%	2177
Lunch Status	Free Lunch	27.4%	10,661	30.5%	4,119	48.7%	5,109	33.5%	19,889
	Reduced Lunch	10.0%	602	11.2%	268	22.8%	452	14.6%	1,322
	Paid Lunch	21.1%	1,052	22.9%	563	45.2%	1,200	31.7%	2,815
EL Status	Non-EL	27.9%	9,646	29.4%	4,204	47.0%	5,802	33.8%	19,625
	EL	19.5%	2,669	23.9%	746	42.0%	959	25.2%	4,374
IEP Status	Non-IEP	25.1%	10,568	26.3%	4,108	44.0%	5,583	30.5%	20,259
	IEP	31.9%	1,747	39.7%	842	57.3%	1,178	41.6%	3,767

Figure 4f. Chronic absence by subgroup 2012-2013



Appendix G: Absenteeism Rates for Providence Schools, SY13-14

Table 1g. Absenteeism rates by school level and grade (2013-2014).

School/Level/Grade	Total Enrollment*	Low 0 to < 5%	Moderate 5 to < 10%	Chronic 10 to < 20%	Excessive ≥ 20%
	N	%	%	%	%
DISTRICT	24,095	41.3%	28.0%	20.4%	10.3%
ELEMENTARY	12,303	45.0%	30.0%	19.0%	6.0%
MIDDLE	5,302	46.5%	27.8%	19.6%	6.2%
HIGH	6,490	30.1%	24.3%	23.8%	21.8%
Kindergarten	2,189	37.0%	30.5%	23.9%	8.6%
Grade 1	2,124	42.7%	30.5%	20.0%	6.9%
Grade 2	2,085	46.7%	29.9%	18.0%	5.5%
Grade 3	1,969	47.6%	31.3%	16.8%	4.3%
Grade 4	2,025	49.6%	28.9%	16.5%	4.9%
Grade 5	1,911	47.7%	28.7%	18.3%	5.3%
Grade 6	1,882	48.0%	28.3%	18.4%	5.3%
Grade 7	1,834	45.9%	28.1%	19.6%	6.4%
Grade 8	1,586	45.2%	26.9%	21.1%	6.9%
Grade 9	1,905	32.0%	21.7%	20.0%	26.4%
Grade 10	1,753	33.5%	23.6%	21.8%	21.1%
Grade 11	1,419	27.1%	26.6%	26.3%	20.1%
Grade 12	1,413	26.4%	26.3%	29.1%	18.3%

*Data reflects students who were ever enrolled in a PPSD non-charter school in grades K - 12 during SY13-14. Beginning in SY11-12, students that were physically educated at facilities other than the 'home' school, as identified by their homeroom in the student information system, were removed from the chronic absence calculations for both district and school levels. For the district and level calculations, overall attendance behavior for each student was used. For school-level calculations, student attendance behavior per school of attendance was used. Students who were enrolled but never showed were deleted from calculations.

Table 2g. Absenteeism rates by school (2013-2014).

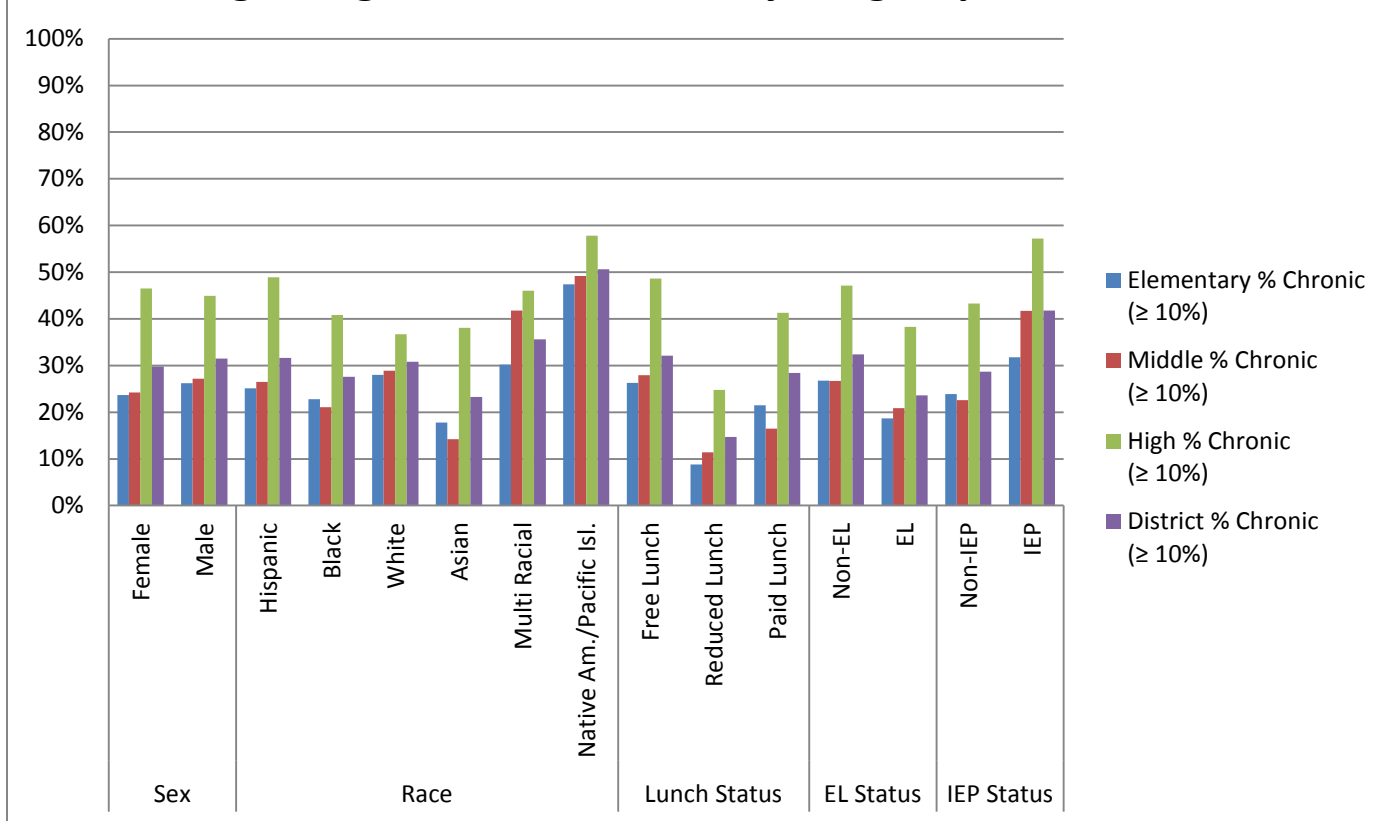
School	Total Enrollment*	Low 0 to < 5%	Moderate 5 to < 10%	Chronic 10 to < 20%	Excessive ≥ 20%
	N	%	%	%	%
ALFRED LIMA	634	46.5%	29.3%	18.9%	5.2%
ANTHONY CARNEVALE	664	46.8%	26.2%	18.2%	8.7%
ASA MESSER ELEM	692	45.2%	29.8%	17.3%	7.7%
CARL G LAURO	1,080	41.1%	28.5%	21.3%	9.1%
CENTRAL	1,222	17.9%	21.7%	25.1%	35.3%
CHARLES FORTES	396	30.1%	34.1%	21.2%	14.6%
CLASSICAL	1,125	49.7%	28.9%	16.9%	4.5%
DELSESTO MIDDLE	1,077	36.4%	26.6%	22.4%	14.7%
E-CUBED ACADEMY	390	30.3%	24.6%	25.1%	20.0%
ESEK HOPKINS	718	37.5%	24.4%	27.2%	11.0%
FEINSTEIN (BROAD)	514	44.6%	31.7%	18.1%	5.6%
FEINSTEIN (SACKETT)	505	44.6%	30.5%	19.2%	5.7%
FRANK SPAZIANO	720	49.2%	32.5%	15.3%	3.1%
GEORGE J WEST	952	42.6%	26.2%	22.1%	9.1%
GILBERT STUART	1,030	41.0%	26.6%	21.2%	11.3%
HARRY KIZIRIAN	696	38.4%	33.6%	20.4%	7.6%
HOPE HIGH	1,058	21.8%	20.3%	25.6%	32.2%
HSTA & PAIS HIGH	744	23.8%	22.4%	24.7%	29.0%
JORGE ALVAREZ HIGH	572	21.0%	23.1%	25.7%	30.2%
LEVITON DUAL LANG	285	63.5%	23.9%	10.5%	2.1%
MARTIN LUTHER KING	600	43.5%	29.5%	22.7%	4.3%
MARY E FOGARTY	571	42.7%	25.4%	24.0%	7.9%
MOUNT PLEASANT HIGH	1,036	36.6%	21.0%	23.1%	19.3%
NATHAN BISHOP	807	47.7%	29.5%	15.9%	6.9%
NATHANAEL GREENE	1,092	50.4%	25.3%	17.8%	6.6%
PLEASANT VIEW	321	35.8%	31.8%	24.6%	7.8%
PROV CAREER AND TECH	598	24.4%	28.6%	29.1%	17.9%
RESERVOIR AVENUE	334	56.0%	30.5%	12.3%	1.2%
ROBERT F KENNEDY	545	47.2%	31.0%	16.1%	5.7%
ROBERT L BAILEY	526	41.3%	28.3%	26.2%	4.2%
ROGER WILLIAMS	911	41.6%	26.0%	22.7%	9.7%
VARTAN GREGORIAN	402	61.4%	24.1%	10.2%	4.2%
VEAZIE STREET	716	39.5%	28.4%	21.5%	10.6%
WEBSTER AVENUE	426	49.8%	30.0%	15.7%	4.5%
WILLIAM DABATE MEMOR	439	58.8%	25.3%	11.8%	4.1%
WOODS & YOUNG ELEM	805	37.1%	31.4%	21.9%	9.6%

Note: Birch Vocational school is not included; the school was closed in the last school year.

Table 3g. Percentage of students chronically absent by subgroup (2013-2014).

Subgroup		Elementary		Middle		High		District	
		% Chronic (≥ 10%)	N	% Chronic (≥ 10%)	N	% Chronic (≥ 10%)	N	% Chronic (≥ 10%)	N
Sex	Female	23.7%	6009	24.2%	2,487	46.5%	3,069	29.8%	11,565
	Male	26.2%	6294	27.2%	2,815	44.9%	3,421	31.5%	12,530
Race	Hispanic	25.1%	8,085	26.5%	3,470	48.9%	4,066	31.6%	15,621
	Black	22.8%	2,052	21.1%	915	40.8%	1,195	27.6%	4,162
	White	28.0%	997	28.9%	457	36.7%	626	30.8%	2,080
	Asian	17.8%	585	14.2%	267	38.1%	378	23.3%	1,230
	Multi Racial	30.2%	470	41.8%	134	46.0%	161	35.6%	765
	Native Am./Pacific Isl.	47.4%	114	49.2%	59	57.8%	64	50.6%	237
Males of Color (MBK)	Hispanic & Black male	26.1%	5178	26.8%	2323	46.8%	2754	31.8%	10255
	Hispanic male	26.6%	4,135	27.7%	1,861	48.8%	2,128	32.7%	8124
	Black male	24.2%	1,043	23.2%	462	39.9%	626	28.6%	2131
Lunch Status	Free Lunch	26.3%	10,526	27.9%	4,436	48.6%	4,884	32.1%	19,846
	Reduced Lunch	8.8%	604	11.4%	297	24.8%	451	14.7%	1,352
	Paid Lunch	21.5%	1,173	16.5%	569	41.3%	1,155	28.4%	2,897
EL Status	Non-EL	26.8%	9,561	26.7%	4,465	47.1%	5,442	32.4%	19,468
	EL	18.7%	2,742	20.9%	837	38.3%	1,048	23.6%	4,627
IEP Status	Non-IEP	23.9%	10,637	22.6%	4,420	43.3%	5,400	28.7%	20,457
	IEP	31.8%	1,666	41.7%	882	57.2%	1,090	41.8%	3,638

Figure 4g. Chronic absence by subgroup 2013-2014



Appendix H: Absenteeism Rates for Providence Schools, SY14-15

Table 1h. Absenteeism rates by school level and grade (2014-2015).

School/Level/Grade	Total Enrollment*	Low 0 to < 5%	Moderate 5 to < 10%	Chronic 10 to < 20%	Excessive ≥ 20%
	N	%	%	%	%
DISTRICT	24,616	37.6%	27.3%	21.7%	13.4%
ELEMENTARY	12,312	43.1%	28.9%	20.6%	7.3%
MIDDLE	5,617	39.3%	27.4%	21.1%	12.2%
HIGH	6,687	26.2%	24.3%	24.1%	25.5%
Kindergarten	2,014	31.6%	30.9%	27.0%	10.5%
Grade 1	2,190	40.6%	28.8%	21.4%	9.2%
Grade 2	2,113	43.7%	29.2%	20.8%	6.2%
Grade 3	2,050	46.1%	28.5%	19.7%	5.7%
Grade 4	1,971	48.6%	28.4%	16.5%	6.5%
Grade 5	1,974	48.4%	27.7%	18.2%	5.7%
Grade 6	1,938	41.5%	29.4%	18.5%	10.6%
Grade 7	1,864	38.0%	27.0%	22.2%	12.8%
Grade 8	1,815	38.3%	25.7%	22.6%	13.4%
Grade 9	2,060	31.0%	24.5%	20.0%	24.5%
Grade 10	1,614	23.9%	24.2%	24.0%	27.9%
Grade 11	1,548	23.9%	24.3%	27.5%	24.4%
Grade 12	1,465	24.3%	24.0%	26.3%	25.3%

*Data reflects students who were ever enrolled in a PPSD non-charter school in grades K - 12 during SY14-15. Beginning in SY11-12, students that were physically educated at facilities other than the 'home' school, as identified by their homeroom in the student information system, were removed from the chronic absence calculations for both district and school levels. For the district and level calculations, overall attendance behavior for each student was used. For school-level calculations, student attendance behavior per school of attendance was used. Students who were enrolled but never showed were deleted from calculations.

Table 2h. Absenteeism rates by school (2014-2015).

School/Level/Grade	Total Enrollment*	Low 0 to < 5%	Moderate 5 to < 10%	Chronic 10 to < 20%	Excessive ≥ 20%
	N	%	%	%	%
ALFRED LIMA	690	43.9%	26.8%	21.4%	7.8%
ANTHONY CARNEVALE	617	43.6%	27.2%	19.0%	10.2%
ASA MESSER ELEM	585	43.6%	25.8%	20.0%	10.6%
CARL G LAURO	1,055	41.6%	27.2%	22.2%	9.0%
CENTRAL	1,278	20.3%	19.2%	26.6%	33.8%
CHARLES FORTES	341	28.7%	32.0%	27.9%	11.4%
CLASSICAL	1,136	38.9%	34.1%	19.5%	7.6%
DELSESTO MIDDLE	1,062	38.0%	24.7%	22.3%	15.0%
E-CUBED ACADEMY	454	31.7%	21.8%	22.2%	24.2%
ESEK HOPKINS	655	33.6%	25.8%	26.3%	14.4%
FEINSTEIN (BROAD)	600	44.0%	28.0%	19.0%	9.0%
FEINSTEIN (SACKETT)	507	43.6%	28.4%	20.9%	7.1%
FRANK SPAZIANO	732	51.9%	24.9%	16.3%	7.0%
GEORGE J WEST	934	44.8%	29.3%	18.3%	7.6%
GILBERT STUART	1,080	41.3%	26.3%	20.7%	11.7%
HARRY KIZIRIAN	707	35.5%	29.7%	24.6%	10.2%
HOPE HIGH	967	19.0%	20.1%	21.4%	39.5%
HSTA & PAIS HIGH	849	27.2%	19.7%	25.2%	27.9%
JORGE ALVAREZ HIGH	555	29.7%	21.3%	22.3%	26.7%
LEVITON DUAL LANG	302	58.3%	27.8%	10.3%	3.6%
MARTIN LUTHER KING	605	39.3%	27.1%	25.1%	8.4%
MARY E FOGARTY	576	39.2%	29.7%	22.9%	8.2%
MOUNT PLEASANT HIGH	1,092	31.2%	21.3%	22.2%	25.3%
NATHAN BISHOP	786	42.2%	26.8%	18.4%	12.5%
NATHANAEAL GREENE	1,085	42.7%	25.0%	18.7%	13.6%
PLEASANT VIEW	331	37.8%	31.7%	21.8%	8.8%
PROV CAREER AND TECH	666	20.1%	29.1%	29.9%	20.9%
RESERVOIR AVENUE	337	49.6%	33.5%	14.2%	2.7%
ROBERT F KENNEDY	536	47.4%	29.7%	18.8%	4.1%
ROBERT L BAILEY	510	36.7%	29.6%	23.3%	10.4%
ROGER WILLIAMS	994	34.6%	28.8%	22.0%	14.6%
VARTAN GREGORIAN	446	52.9%	24.4%	15.5%	7.2%
VEAZIE STREET	727	39.6%	27.8%	22.8%	9.8%
WEBSTER AVENUE	438	48.9%	25.3%	19.6%	6.2%
WILLIAM DABATE MEMOR	432	58.3%	24.5%	14.1%	3.0%
WOODS & YOUNG ELEM	843	42.2%	31.0%	19.9%	6.9%
WEST BROADWAY	384	50.8%	28.4%	14.3%	6.5%
AVENTURE*	116	13.8%	8.6%	18.1%	59.5%

*Aventure is an in-district behavioral intervention program. At any point during the school year students may be referred to Aventure or SAO'd to Aventure. Because the dates of a student's enrollment at Aventure are not readily accessible in Skyward, the attendance record for any student that was enrolled at Aventure for any length of time has been separated out for reporting purposes. Students enrolled at Aventure for any length of time are not included in the school-level computations (for their home school). Aventure students, while physically leaving their home school, do not leave the district therefore their attendance records are reflected in the overall grade-level and district-level computations. Typically students who are at alternative placements are not included in any of the calculations (see 'Methods & Data' section).

Table 3h. Percentage of students chronically absent by subgroup (2014-2015).

Subgroup		Elementary		Middle		High		District	
		% Chronic (≥ 10%)	N	% Chronic (≥ 10%)	N	% Chronic (≥ 10%)	N	% Chronic (≥ 10%)	N
Sex	Female	27.0%	5967	30.9%	2,627	51.0%	3,090	34.2%	11,684
	Male	28.9%	6345	35.4%	2,990	48.4%	3,597	35.8%	12,932
Race	Hispanic	27.5%	7,948	33.6%	3,607	51.7%	4,229	35.4%	15,784
	Black	24.8%	2,007	30.7%	975	45.3%	1,176	32.0%	4,158
	White	34.3%	1,079	36.5%	521	43.7%	668	37.6%	2,268
	Asian	23.4%	603	21.9%	292	43.1%	350	28.6%	1,245
	Multi Racial	34.5%	530	43.9%	164	54.7%	190	40.6%	884
	Native Am./Pacific Isl.	44.1%	145	55.2%	58	63.5%	74	51.6%	277
Males of Color (MBK)	<i>Hispanic & Black male</i>	28.2%	5,121	35.0%	2,442	49.5%	2,887	35.7%	10,449
	<i>Hispanic male</i>	28.5%	4,103	35.5%	1,938	50.8%	2,266	36.2%	8,307
	<i>Black male</i>	26.9%	1,018	32.9%	504	44.9%	621	33.6%	2,142
Lunch Status	Free Lunch	29.3%	10,246	35.8%	4,580	52.4%	4,919	36.6%	19,745
	Reduced Lunch	16.7%	606	19.2%	281	32.0%	1,287	22.6%	3,503
	Paid Lunch	23.1%	1,460	23.3%	756	45.2%	481	31.3%	1,368
LEP Status	Non-EL	30.5%	8,359	35.2%	4,182	50.5%	5,241	37.5%	17,782
	EL	22.6%	3,953	27.8%	1,435	46.1%	1,446	28.7%	6,834
IEP Status	Non-IEP	26.7%	10,556	30.4%	4,674	48.4%	5,593	33.3%	20,823
	IEP	35.8%	1,756	47.6%	943	55.4%	1,094	44.4%	3,793

Figure 4h. Chronic absence by subgroup 2014-2015

