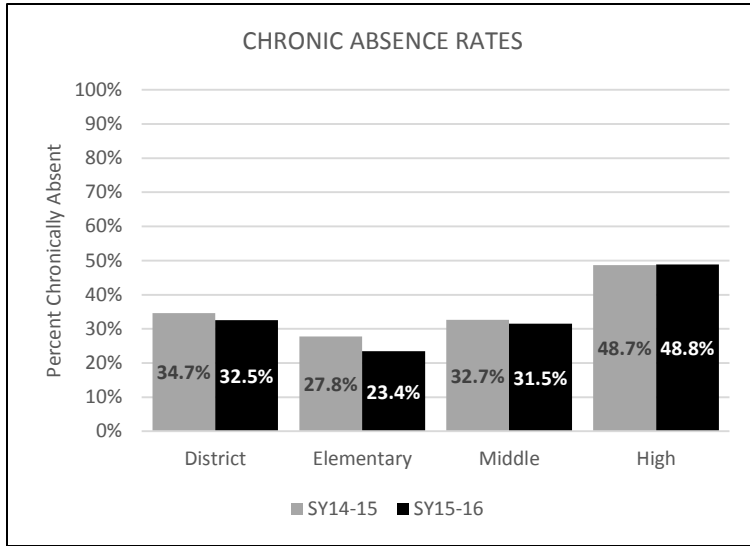


CHRONIC ABSENTEEISM



Grade Level for Schools	# Schools Chronic Absence Rate ↓	
	#Improved	%
Elementary	20	87%
Middle	4	50%
High	4	44%

Key Findings

- Overall, chronic absence rates improved in SY15-16 to 33% from 35% in SY14-15.
- On average, chronically absent students lost approximately 10,846 instructional minutes and were absent an average of 33 school days.
- Nearly all elementary schools saw improvements in their chronic absence rates which are reflected in a 4 percentage point improvement at the elementary level.
- Middle schools saw a small improvement and high schools held their chronic absence rate steady.

Overview

Chronic absenteeism is among the most pressing issues facing schools nationwide. A first-ever release of national chronic absence data found that 13% of all US students, or nearly 6.5 million students, were chronically absent in SY13-14. The new national findings coupled with over a decade of research from districts around the nation highlight the need for collective action to confront high absence rates in the country's schools.

Locally, reducing chronic absenteeism is a top priority for the Providence Public School District. Across the District, the implementation of programs and transformation of practices can reduce student absences and reduce lost instructional minutes.

The purpose of this data brief is to provide chronic absenteeism rates for the Providence Public School District for school years 2009-2010 through 2015-2016. Data are presented at the district, school, and grade levels.

Why is Chronic Absenteeism Important?

Chronic absenteeism is defined as missing 10% or more of school in a year, including excused and unexcused absences. As an example, students enrolled for the entire 180-day school year who miss at least 18 school days are considered chronically absent.¹ There are many reasons students miss school: physical ailments particularly asthma and oral health; a lack of understanding the importance of attending school, particularly at the Kindergarten level; and avoiding school due to feeling unsafe or issues with bullies.²

No matter what the reason, missing school negatively impacts students' academic achievement and likelihood to graduate. The negative impact starts early in the school year; if a student is absent several days in September they are more likely to be chronically absent for the year.³ The negative impact also starts in the early years of schooling. By first grade, students' attendance is an indicator of their likelihood to graduate.⁴ Research indicates that chronic absence negatively impacts literacy development and that students who are not reading proficiently by third grade are four times more likely to dropout.⁵

Researchers Chang and Balfanz recently analyzed new national CRDC data and found that nearly 6.5 million or 13% of US students were chronically absent in SY13-14.^{6, 7} They found that half of all chronically absent students were located in just 4% of the nation's school districts. Among those 4% of districts, nearly half were in urban areas with high child poverty rates and high rates of students of color. The other half of districts were in suburban areas with growing low-incomes and diverse populations. According to their research, three Rhode Island school districts (Cranston, Providence and Woonsocket) were among the 4% of districts nationwide and accounted for half of the chronically absent students in Rhode Island in SY13-14.

Locally, the Rhode Island DataHUB produced a data story on chronic absenteeism and found that chronically absent Kindergartners were 20 percentage points lower in reading than their non-chronically absent peers, 25 percentage points lower in mathematics, two times more likely to be retained, two times more likely to be suspended by the end of seventh grade, and more likely to continue being chronically absent.⁸

In Providence Schools one-third of students overall, and nearly one-half of high school students are chronically absent. This equates to over 10,800 instructional minutes lost on average, or about 33 school days. Prior research finds students from high-poverty urban districts have higher rates of chronic absence.⁹ Considering that 86% of the Districts' students are eligible for free or reduced lunch, this adds context to the high rates of chronic absenteeism in Providence. Consequently, it is imperative that chronic absenteeism be addressed in Providence Public Schools.

District efforts to address chronic absenteeism have been shown to have an impact. Since 2011, PPSD has collected and disseminated chronic absenteeism data to various schools and community stakeholders. PPSD began raising awareness about the need to address chronic absenteeism by hosting a day-long workshop in fall 2011 with Hedy Chang, a national leader in the campaign to reduce chronic absenteeism. An in-depth strategy session was held with principals in March 2012 to encourage them to create school-based data teams and incorporate chronic absence goals into their school improvement plans. From fall 2012 through SY13-14 a number of high schools partnered with Get Schooled¹⁰ and two won the national competition. One high school winner, Mount Pleasant, experienced a 27 percentage point reduction between SY10-11 and SY13-14, from 69.4 to 49.4 respectively. The federal My Brother's Keeper Success Mentors program began in SY14-15 with cohorts of chronically absent students in three middle schools and one high school receiving on-going mentorship in order to improve student mindset, academic behaviors and attendance. Other efforts included cross-sector representation on school-based attendance teams (e.g., Fogarty and Lillian Feinstein elementary schools).

Next Steps

This report highlights the magnitude of the chronic absenteeism issue in Providence's schools. Based on the findings, reducing chronic absence rates should remain a priority area. The Providence Children's Youth Cabinet recently refocused its efforts and named chronic absenteeism as one its three priorities. As part of its collective impact approach, the CYC will be working with PPSD and community partners to reduce absenteeism across the District.

The findings also highlight the need to study the impact of programs currently underway in Providence Public Schools. As an example, chronic absence rates for students who participate in the My Brother's Keeper Success Mentor program will be investigated.

Findings

- The chronic absenteeism rate decreased to 32.5% in SY15-16, a decline of 2.2 percentage points from SY14-15 when it was 34.7%.
- Lost instructional minutes varies by grade level. Chronically absent students in elementary schools lost on average over 8,000 instructional minutes equating to 25 missed school days. Middle School students who were chronically absent lost over 10,400 instructional minutes or 32 days on average. Chronically absent high school students lost more than 13,300 instructional minutes, an average of 40 days.
- Chronic absence rates declined for Kindergarten, grades 1-6, 8, 10 and 11. Rates increased for grades 7, 9 and 12.
- Elementary schools tend to have lower chronic absenteeism rates. Within grades K-5, Kindergarten had the highest chronic absence rate. However, while highest, Kindergarten saw the largest improvement over any other grade, a 7.5 percentage point decline from SY14-15 to SY15-16.
- Across all grades, the lowest chronic absence rates were for grades 4 and 5 (18.9% and 20.3% respectively) and both saw improvements from SY14-15.
- The highest rates were among grades 9-12, a range of 46%-52.4%.
- Ninth grade historically had one of the highest chronic absence rates. The excessive absence rate (>20% absence rate) had shown a 5-year positive trend from a baseline of 36.3% in SY09-10 to 24.5% SY14-15. In SY15-16, the excessive rate for grade 9 increased to 26.6%.
- Among the four largest racial and ethnic subgroups in PPSD, White students had the highest rate of chronic absenteeism (34.4%) and Asian students the lowest (26.1%).
- Among PPSD's special populations, EL students had a lower rate of chronic absence than non-ELs by approximately five percentage points (29.1% and 33.9% respectively); students with an IEP had a higher rate of chronic absence than students without an IEP by 11 percentage points (42.5% and 30.9% respectively).

Schools¹¹ with notable chronic absence rates include:

- Nearly all elementary schools saw a decline in their chronic absenteeism rate; King had the largest decline of 10 percentage points to 23.7% in SY15-16 from 33.8% in SY14-15. Bailey had the second largest decline of 8 percentage points.
- Nathanael Greene had the largest improvement for middle schools; 3.4 percentage point decline.
- Classical and Providence Career and Tech had the largest improvements for non-Charter high schools at 4.7 percentage points each respectively.

Methods and Data

Sample. Students who were enrolled in grades K – 12 in a Providence school (including ACE and Times2 charters beginning SY14-15) at any point during the school year were included. This includes any student that was enrolled for at least one day and attended for at least one day. Exceptions include students who were enrolled but never showed for at least one day and since SY11-12, students that were physically educated at facilities other than the ‘home’ school as identified by their homeroom in the student information system (e.g., Alternative Learning Plan, Virtual Credit Recovery with dropout status, YouthBuild). Students at the AVenture program are included in the District and grade level analyses and AVenture is reported as a separate school.

Overall attendance data for the year for each student was used for district level calculations (summed across all schools of attendance). Attendance data for each student at every school attended was used for school calculations (student attendance record assigned only to a school for the period of time when they were enrolled there).

Analyses. Students were assigned an absenteeism level based on their percentage of days absent for each school year.

Definitions. For the purpose of the current brief, students fall into one of four mutually exclusive absenteeism groups:

Low	Students who are absent fewer than 5% of the days they are enrolled.
Moderate	Students who are absent 5% to < 10% of the days they are enrolled.
Chronic	Students who are absent 10% to < 20% of the days they are enrolled.
Excessive	Students who are absent at least 20% of the days that they are enrolled.

Because students who are absent at least 10% of the time are at increased risk for negative outcomes, chronic and excessively absent students are reported together as chronically absent for purposes of discussion.

Limitations

To date, efforts to reduce chronic absence have not been consistently monitored or evaluated. Observed differences between the school years may be due to cohort fluctuations, data collection methods, or chance, which should be considered when drawing inferences or conclusions. For example, data collection of attendance should be uniform across schools. In SY11-12 a systematic change in the method for inputting attendance data at the high school level was implemented. The 7.1 percentage point decrease in chronic

absence at the high school level from SY10-11 to SY11-12 may be the result of more accurate data collection and/or it could indicate improvement based on intentional efforts.

The implementation of the new student information system in SY14-15 was an opportunity to provide clear guidelines for collecting data at all Providence schools. However, challenges with the implementation of the new system may have impacted the rates; Esek Hopkins middle school may be an example as well as The Academy for Career Exploration (ACE) and Times2 Charter Schools.

Report Use

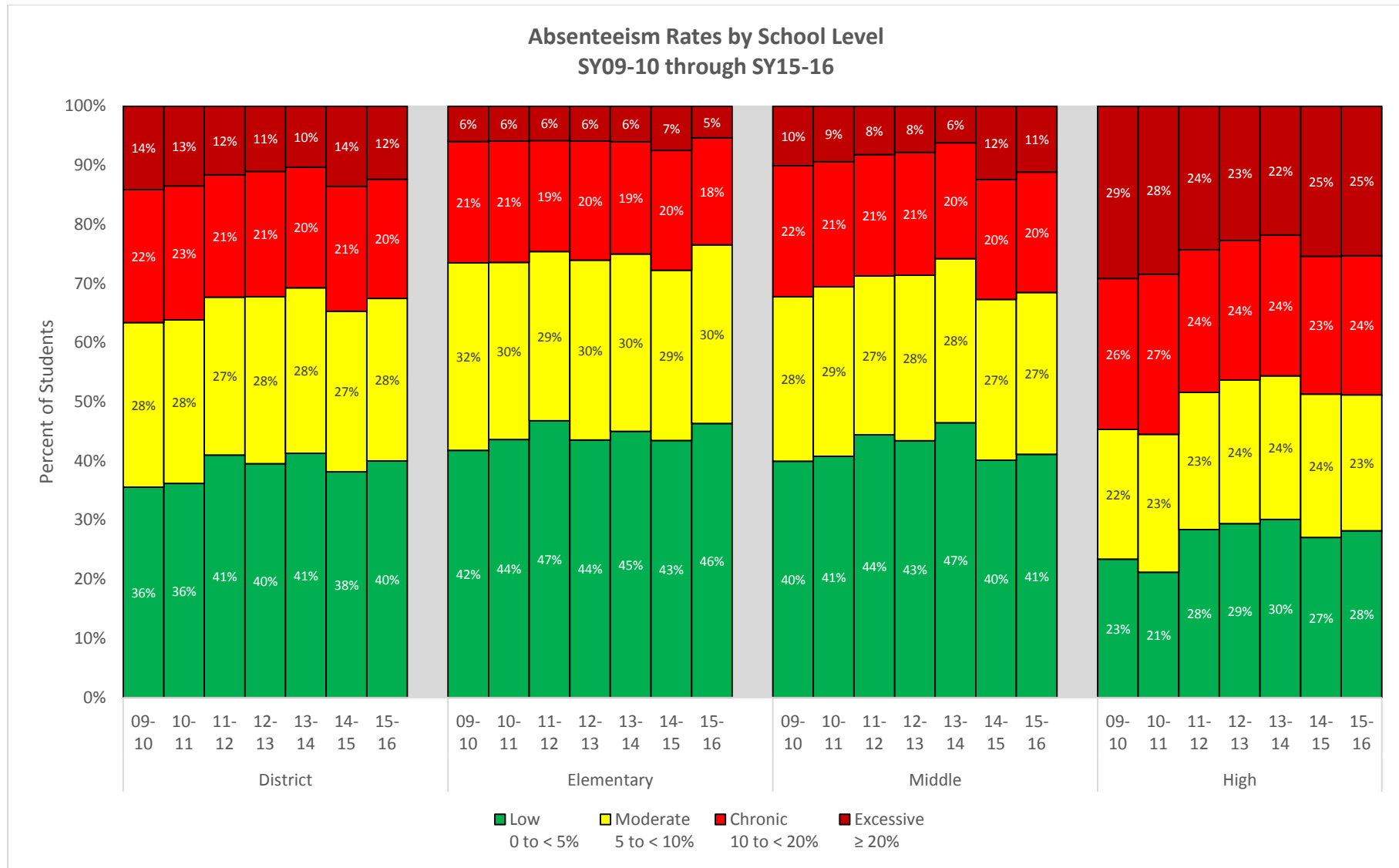
This is Providence Public School’s official report on Chronic Absenteeism for SY15-16. The data and information are considered final and are the standard for any internal or public documentation.

Notes and References

1. Chang, H. (December, 2011). *Reducing the achievement gap and school drop out: The imperative for reducing chronic absence starting with school entry*. Invited presentation to Providence Public Schools.
2. *Mapping the Early Attendance Gap: Charting a Course for Student Success. Attendance Works & Healthy Schools Campaign, September 2015.*
3. Olson, L. S. (2014). *Why September Matters: Improving Student Attendance*. Baltimore Education Research Consortium Policy Brief.
4. Schoeneberger, J. A. (2011). Longitudinal Attendance Patterns: Developing High School Dropouts. *The Clearing House: A Journal of Educational Strategies, Issues and Ideas*, 85(1), 7-14.
5. Hernandez, D. A., *Double Jeopardy: How Third-Grade Reading Skills and Poverty Influence High School Graduation*. Annie E. Casey Foundation, April 2012.
6. Chang&Balfanz (2016). *Preventing Missed Opportunity: Taking Collective Action to Confront Chronic Absence*. Attendance Works, Johns Hopkins University, and Everyone Graduates Center.
7. Note: The definition of Chronic Absence in Civil Rights Data Collection (CRDC), the national data used in the Chang&Balfanz report, differs from previous work of Chang&Balfanz and PPSD. The definition in the national dataset is missing 15 days or more from school.
8. Accessed online at: <http://ridatahub.org/datastories/chronic-absenteeism-in-kindergarten/2/>
9. Balfanz, R. & Byrnes, V. (2012). *Chronic Absenteeism: Summarizing What We Know From Nationally Available Data*. Baltimore: Johns Hopkins University Center for Social Organization of Schools.
10. Get Schooled is a non-profit organization that uses media to encourage student attendance. Website: <https://getschooled.com/>
11. Note: Esek Hopkins, Academy for Career Exploration (ACE), and Times2 schools are not included in the school level ranking analysis as attendance data collection may not be consistent with other district schools.

Appendices	Chart Title	Page Number
A	Absenteeism Rates by School Level	5
B1	Absenteeism Rates Grades K-5	6
B2	Absenteeism Rates Grades 6-8	7
B3	Absenteeism Rates Grades 9-12	8
C1	Chronic and Excessive Absenteeism Rates for Elementary Schools	9
C2	Chronic and Excessive Absenteeism Rates for Middle and High Schools	10
D1	Absenteeism Rates by School Level and Grade, SY10-11	11
D2	Percent of Students Chronically Absent by Subgroup, SY10-11	11
D3	Absenteeism Rates for Providence Schools, SY10-11	12
E1	Absenteeism Rates by School Level and Grade, SY11-12	13
E2	Percent of Students Chronically Absent by Subgroup, SY11-12	13
E3	Absenteeism Rates for Providence Schools, SY11-12	14
F1	Absenteeism Rates by School Level and Grade, SY12-13	15
F2	Percent of Students Chronically Absent by Subgroup, SY12-13	15
F3	Absenteeism Rates for Providence Schools, SY12-13	16
G1	Absenteeism Rates by School Level and Grade, SY13-14	17
G2	Percent of Students Chronically Absent by Subgroup, SY13-14	17
G3	Absenteeism Rates for Providence Schools, SY13-14	18
H1	Absenteeism Rates by School Level and Grade, SY14-15	19
H2	Percent of Students Chronically Absent by Subgroup, SY14-15	19
H3	Absenteeism Rates for Providence Schools, SY14-15	20
I1	Absenteeism Rates by School Level and Grade, SY15-16	21
I2	Percent of Students Chronically Absent by Subgroup, SY15-16	21
I3	Absenteeism Rates for Providence Schools, SY15-16	22

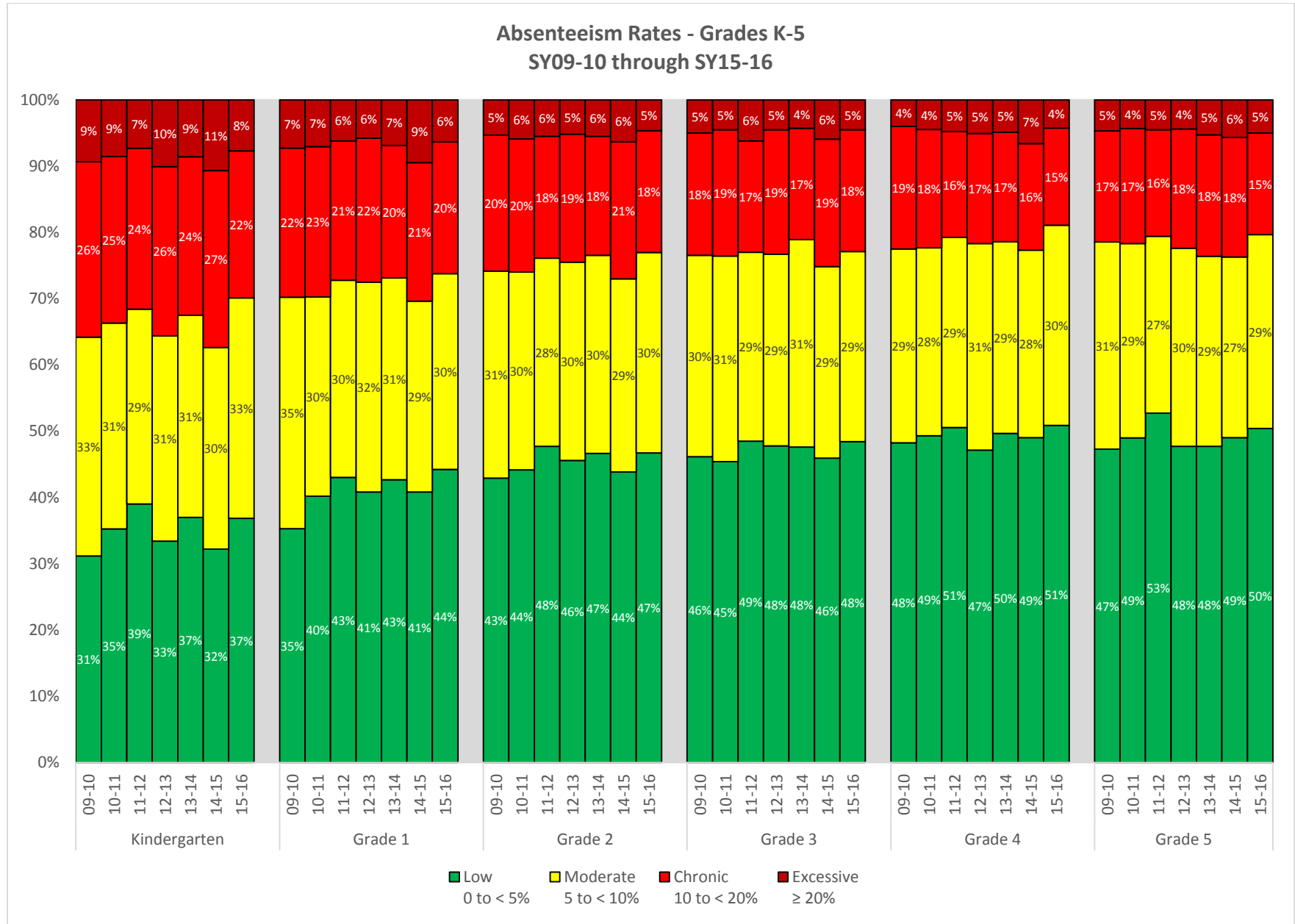
A: Absenteeism Rates by School Level



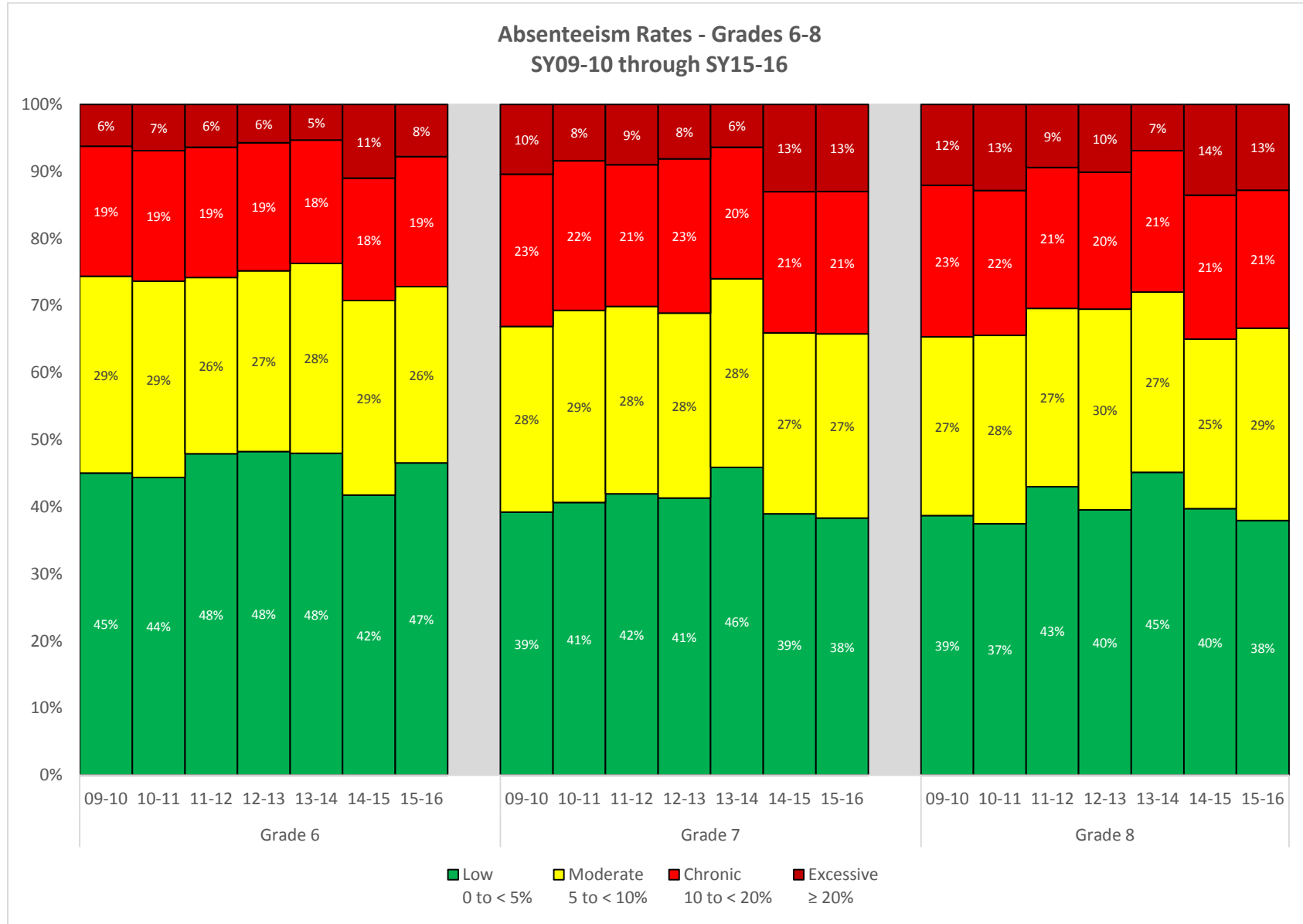
Note: Due to rounding, these percentages may not total to the percentages displayed on the Chronic Absence Rates bar graph on page 1 if those were rounded.

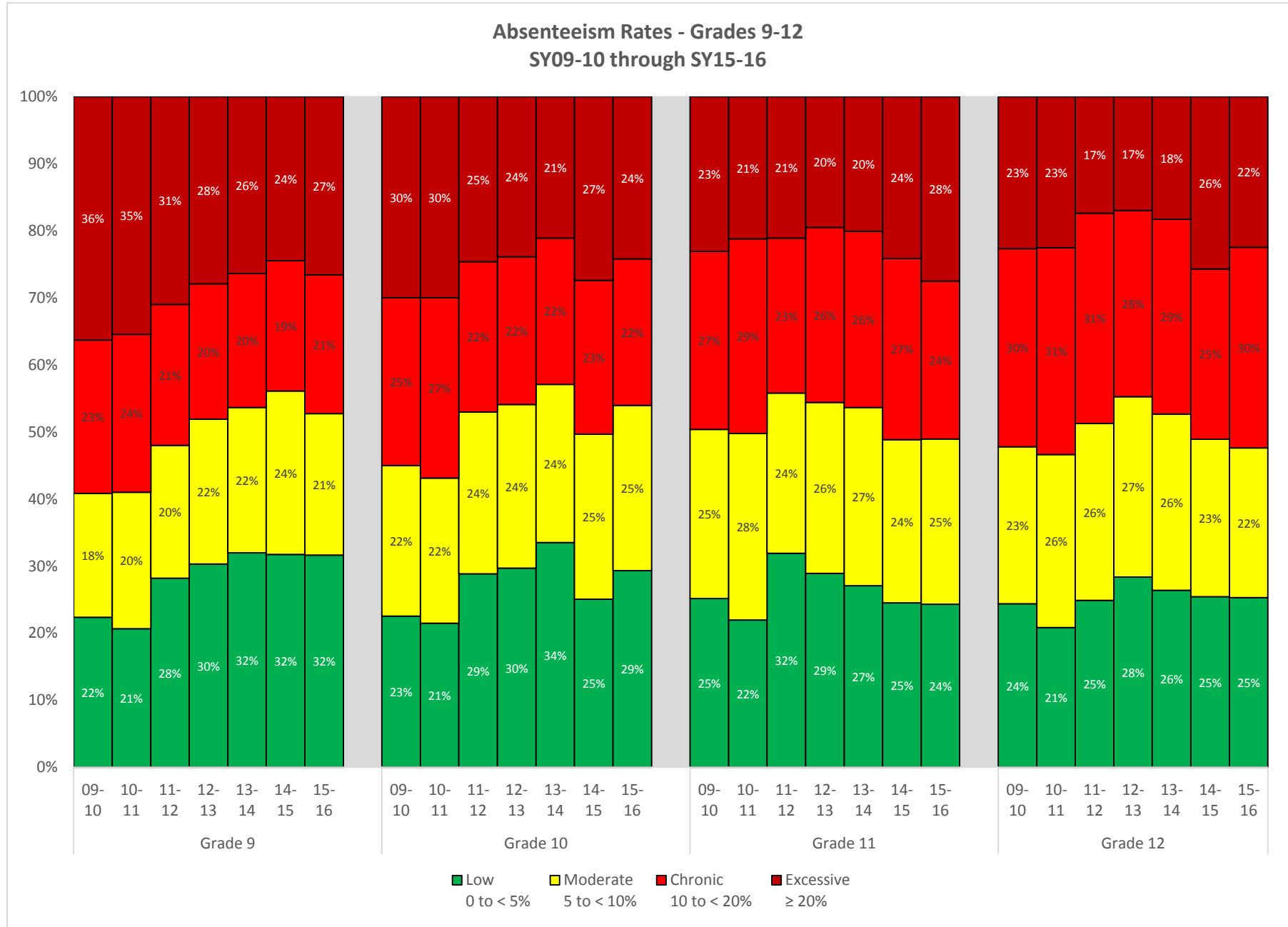
B: Absenteeism Rates by Grade

B1: Absenteeism Rates - Grades K-5



B2: Absenteeism Rates - Grades 6-8





C: Chronic and Excessive Absenteeism Rates

C1: Chronic and Excessive Absenteeism Rates for Elementary Schools SY10-11 through SY15-16

Elementary Schools	% Chronic or Excessive						Change SY14-15 to SY15-16
	SY10-11	SY11-12	SY12-13	SY13-14	SY14-15	SY15-16	
ALAN SHAWN FEINSTEIN (BROAD)	21.8%	23.5%	28.0%	23.7%	29.0%	22.6%	↓
ALFRED LIMA	19.8%	24.1%	26.6%	24.1%	29.8%	26.7%	↓
ANTHONY CARNEVALE	18.0%	24.4%	24.0%	26.9%	29.2%	24.4%	↓
ASA MESSER	29.2%	27.6%	28.5%	25.0%	31.0%	30.8%	↓
CARL G LAURO	32.2%	31.3%	32.2%	30.4%	31.8%	28.0%	↓
CHARLES FORTES*	23.3%	30.8%	41.8%	35.8%	39.8%	30.3%	↓
DR. MARTIN LUTHER KING JR.	29.6%	25.6%	27.2%	27.0%	33.8%	23.7%	↓
FRANK SPAZIANO	21.1%	18.0%	17.0%	18.4%	23.8%	20.3%	↓
GEORGE J WEST	22.6%	27.5%	26.3%	31.2%	25.9%	26.8%	↑
HARRY KIZIRIAN	36.3%	31.4%	34.4%	28.0%	34.9%	28.4%	↓
LEVITON DUAL LANG	NA	NA	7.9%	12.6%	14.7%	16.6%	↑
LILLIAN FEINSTEIN (SACKETT)	27.5%	25.2%	22.8%	24.9%	27.8%	19.8%	↓
MARY E FOGARTY	29.7%	32.5%	27.0%	31.9%	31.7%	24.4%	↓
PLEASANT VIEW	36.1%	32.5%	29.4%	32.4%	30.6%	24.5%	↓
RESERVOIR AVENUE	22.0%	16.6%	17.4%	13.5%	16.7%	16.1%	↓
ROBERT F KENNEDY	15.6%	15.9%	22.2%	21.8%	23.2%	19.1%	↓
ROBERT L BAILEY	32.4%	28.7%	31.2%	30.4%	34.1%	26.1%	↓
TIMES2 ELEMENTARY [†]	NA	NA	NA	NA	11.0%	7.8%	↓
VARTAN GREGORIAN	20.6%	14.1%	13.9%	14.4%	22.5%	19.3%	↓
VEAZIE STREET	34.9%	34.9%	33.4%	32.1%	33.2%	29.4%	↓
WEBSTER AVENUE	26.2%	19.7%	26.5%	20.2%	26.1%	25.3%	↓
WILLIAM DABATE MEMORIAL	22.9%	20.8%	17.6%	15.9%	17.1%	18.0%	↑
WOODS/YOUNG	38.2%	33.8%	36.9%	31.5%	27.1%	25.0%	↓

Note: Cells highlighted in the color green represent the lowest chronic absenteeism (top quartile) while the color red represents the highest chronic absenteeism (bottom quartile).

*Asa Messer elementary school has a grade span of Kindergarten to grade 4. Alfred Lima elementary school spans grades 2 through 5. Charles Fortes elementary school has a grade span of pre-Kindergarten to grade 1. Times2 Elementary has a grade span of Kindergarten to grade 6. Grade structure may be a factor in higher or lower levels of chronic absenteeism for these schools.

[†]Times2 school's collection of attendance data may have been inconsistent with other district schools' collection methods resulting in overall attendance and chronic absenteeism rates that were higher or lower than expected.

C2: Chronic and Excessive Absenteeism Rates for Middle and High Schools SY10-11 through SY15-16

Middle Schools	% Chronic or Excessive						Change SY14-15 to SY15-16
	SY10-11	SY11-12	SY12-13	SY13-14	SY14-15	SY15-16	
DELSESTO	36.1%	37.6%	39.5%	37.1%	37.3%	34.9%	↓
ESEK HOPKINS [†]	38.8%	36.2%	35.0%	38.2%	42.7%	38.0%	↓
GILBERT STUART	34.8%	37.6%	33.1%	32.5%	33.0%	36.7%	↑
NATHAN BISHOP	25.8%	26.1%	24.7%	22.8%	31.6%	32.9%	↑
NATHANAEL GREENE	29.8%	24.7%	28.6%	24.4%	32.5%	29.1%	↓
ROGER WILLIAMS	42.9%	42.4%	34.0%	32.4%	37.3%	36.2%	↓
TIMES2 MIDDLE ^{*,†}	NA	NA	NA	NA	0.8%	6.4%	↑
WEST BROADWAY*	NA	NA	NA	NA	21.2%	26.4%	↑
High Schools	% Chronic or Excessive						Change SY14-15 to SY15-16
	SY10-11	SY11-12	SY12-13	SY13-14	SY14-15	SY15-16	
360 HIGH	NA	NA	NA	NA	NA	48.3%	NA
ACADEMY FOR CAREER EXPLORATION [†]	NA	NA	NA	NA	47.8%	24.7%	↓
CENTRAL	61.8%	58.8%	61.7%	60.4%	60.6%	62.0%	↑
CLASSICAL	22.5%	19.4%	19.3%	21.4%	27.0%	22.3%	↓
DR. JORGE ALVAREZ	67.5%	64.9%	57.9%	55.9%	49.1%	51.5%	↑
E-CUBED ACADEMY	57.8%	43.9%	50.0%	45.1%	44.4%	42.0%	↓
EVOLUTIONS	NA	NA	NA	NA	NA	58.0%	NA
HOPE	61.3%	61.3%	56.8%	57.8%	61.9%	65.1%	↑
JSEC	64.8%	52.0%	49.4%	53.7%	54.3%	63.9%	↑
MOUNT PLEASANT	69.4%	58.7%	49.3%	42.4%	48.4%	50.9%	↑
PROV CAREER AND TECH	60.3%	43.6%	47.4%	47.0%	50.8%	46.1%	↓
TIMES2 HIGH [†]	NA	NA	NA	NA	7.9%	14.0%	↑
AVENTURE	NA	NA	NA	NA	65.6%	48.3%	↓

Note: Cells highlighted in the color green represent the lowest chronic absenteeism (top quartile) while the color red represents the highest chronic absenteeism (bottom quartile).

* Times2 Middle School spans grades 7 through 8. West Broadway spans grades 5 through 8. Grade structure may be a factor in higher or lower levels of chronic absenteeism for these schools.

[†]Esek Hopkins (SY14-15 only), Academy for Career Exploration, and Times2 school's collection of attendance data may have been inconsistent with other district schools' collection methods resulting in overall attendance and chronic absenteeism rates that were higher or lower than expected.

D: Absenteeism Rates SY10-11

D1: Absenteeism rates by school level and grade SY10-11

School/Level/Grade	Total Enrollment*	Low 0 to < 5%	Moderate 5 to < 10%	Chronic 10 to < 20%	Excessive ≥ 20%
	N	%	%	%	%
District	24,191	36.2%	27.7%	22.6%	13.5%
Elementary	11,792	43.6%	30.0%	20.5%	5.9%
Middle	5,014	40.8%	28.7%	21.2%	9.4%
High	7,385	21.2%	23.3%	27.1%	28.4%
Kindergarten	2,045	35.3%	31.1%	25.1%	8.6%
Grade 1	2,147	40.2%	30.0%	22.7%	7.1%
Grade 2	2,052	44.2%	29.9%	20.1%	5.9%
Grade 3	1,944	45.4%	31.0%	19.0%	4.5%
Grade 4	1,916	49.3%	28.3%	17.8%	4.5%
Grade 5	1,688	49.0%	29.3%	17.4%	4.3%
Grade 6	1,598	44.4%	29.3%	19.5%	6.9%
Grade 7	1,772	40.6%	28.7%	22.3%	8.4%
Grade 8	1,644	37.5%	28.1%	21.6%	12.8%
Grade 9	2,380	20.7%	20.3%	23.5%	35.5%
Grade 10	1,988	21.5%	21.6%	26.9%	30.0%
Grade 11	1,499	21.9%	27.8%	29.0%	21.2%
Grade 12	1,518	20.8%	25.8%	30.8%	22.5%

D2: Percent of students chronically absent by subgroup SY10-11

Subgroup		Elementary		Middle		High		District	
		% Chronic (≥ 10%)	N	% Chronic (≥ 10%)	N	% Chronic (≥ 10%)	N	% Chronic (≥ 10%)	N
Sex	Female	26.2%	5,660	29.5%	2,402	55.8%	3,637	36.1%	11,699
	Male	26.6%	6,132	31.5%	2,612	55.1%	3,748	36.2%	12,492
Race	Hispanic	26.1%	7,492	32.3%	3,149	58.7%	4,513	37.1%	15,154
	Black	24.2%	2,121	25.3%	916	53.3%	1,509	34.1%	4,546
	White	30.3%	1,061	28.9%	481	48.0%	692	35.5%	2,234
	Asian	21.3%	605	28.1%	260	42.0%	464	29.9%	1,329
	Multi Racial	35.3%	391	30.3%	142	54.0%	150	38.4%	683
	Native Am./Pacific Isl.	46.7%	122	39.4%	66	64.9%	57	49.0%	245
Lunch Status	Free Lunch	27.7%	10,024	32.5%	4,212	58.2%	5,611	37.4%	19,847
	Reduced Lunch	11.8%	636	18.7%	294	35.2%	509	21.5%	1,439
	Paid Lunch	22.7%	1,132	20.7%	508	51.6%	1,265	34.9%	2,905
EL Status	Non-EL	28.0%	9,367	31.2%	4,469	55.7%	6,530	37.6%	20,366
	EL	20.1%	2,425	25.1%	545	53.7%	855	28.3%	3,825
IEP Status	Non-IEP	25.6%	10,009	28.0%	4,047	53.2%	6,081	34.4%	20,137
	IEP	31.0%	1,783	41.0%	967	66.0%	1,304	44.6%	4,054

D3: Absenteeism rates by school SY10-11

School/Level/Grade	Total Enrollment*	Low 0 to < 5%	Moderate 5 to < 10%	Chronic 10 to < 20%	Excessive ≥ 20%
	N	%	%	%	%
ALFRED LIMA	271	56.1%	31.0%	10.3%	2.6%
ALFRED LIMA ANNEX	221	34.8%	38.0%	20.8%	6.3%
ANTHONY CARNEVALE	478	51.3%	30.8%	14.4%	3.6%
ASA MESSER	295	48.8%	27.1%	18.3%	5.8%
ASA MESSER ANNEX	177	41.8%	26.6%	19.8%	11.9%
BIRCH VOCATIONAL	83	79.5%	13.3%	2.4%	4.8%
CARL G LAURO	906	40.1%	27.7%	23.5%	8.7%
CENTRAL	1,326	14.6%	23.5%	25.3%	36.6%
CHARLES FORTES	400	43.8%	33.3%	17.5%	5.5%
CHARLES FORTES ANNEX	166	41.0%	25.9%	27.7%	5.4%
CLASSICAL	1,069	46.9%	30.6%	18.2%	4.3%
CORNEL YOUNG, JR.	313	34.5%	29.7%	27.8%	8.0%
DELSESTO MIDDLE	540	32.2%	31.7%	22.0%	14.1%
E-CUBED ACADEMY	436	17.9%	24.3%	27.1%	30.7%
EDMUND FLYNN	616	40.1%	29.1%	22.9%	8.0%
ESEK HOPKINS	577	31.9%	29.3%	24.1%	14.7%
FEINSTEIN (BROAD)	418	45.2%	33.0%	16.7%	5.0%
FEINSTEIN (SACKETT)	520	42.9%	29.6%	17.9%	9.6%
FRANK SPAZIANO ELEM & ANNEX	626	50.5%	28.4%	16.5%	4.6%
GEORGE J WEST	725	49.9%	27.4%	18.5%	4.1%
GILBERT STUART	911	41.8%	23.4%	19.1%	15.7%
HARRY KIZIRIAN	637	31.6%	32.2%	25.4%	10.8%
HOPE-ARTS	726	19.7%	19.0%	27.1%	34.2%
HOPE-TECHNOLOGY	650	14.3%	17.2%	27.5%	40.9%
HSTA & PAIS HIGH	457	17.1%	18.2%	31.7%	33.0%
JORGE ALVAREZ HIGH	695	12.9%	19.6%	30.9%	36.5%
MARTIN LUTHER KING	507	40.4%	30.0%	21.7%	7.9%
MARY E FOGARTY	508	39.2%	31.1%	22.4%	7.3%
MOUNT PLEASANT HIGH	1,322	10.7%	19.9%	26.9%	42.6%
NATHAN BISHOP	569	44.6%	29.5%	16.2%	9.7%
NATHANAEL GREENE	919	43.4%	26.8%	22.0%	7.8%
PLEASANT VIEW	349	37.2%	26.6%	25.2%	10.9%
PROV ACAD INT STUDY	445	20.7%	21.1%	32.6%	25.6%
PROV CAREER AND TECH	461	20.4%	19.3%	33.2%	27.1%
RESERVOIR AVENUE	328	46.3%	31.7%	17.1%	4.9%
ROBERT F KENNEDY	557	56.4%	28.0%	12.7%	2.9%
ROBERT L BAILEY	472	36.0%	31.6%	22.9%	9.5%
ROGER WILLIAMS	856	28.5%	28.6%	28.7%	14.1%
SAMUEL W BRIDGHAM	661	31.2%	25.6%	26.3%	16.9%
VARTAN GREGORIAN	379	53.6%	25.9%	15.3%	5.3%
VEAZIE STREET	607	38.9%	26.2%	26.0%	8.9%
WEBSTER AVENUE	363	51.0%	22.9%	20.4%	5.8%
WEST BROADWAY ELEMEN	500	34.0%	30.4%	28.8%	6.8%
WILLIAM DABATE MEMOR	450	52.7%	24.4%	18.2%	4.7%
WINDMILL STREET ELEM	484	34.9%	29.3%	24.8%	11.0%
WOODS & YOUNG ELEM	364	30.5%	31.3%	24.5%	13.7%

E: Absenteeism Rates SY11-12

E1: Absenteeism rates by school level and grade SY11-12

School/Level/Grade	Total Enrollment*	Low 0 to < 5%	Moderate 5 to < 10%	Chronic 10 to < 20%	Excessive ≥ 20%
	N	%	%	%	%
District	24,127	41.0%	26.7%	20.7%	11.6%
Elementary	12,222	46.8%	28.6%	18.8%	5.8%
Middle	4,994	44.4%	26.9%	20.5%	8.2%
High	6,911	28.4%	23.2%	24.1%	24.3%
Kindergarten	2,112	39.0%	29.4%	24.3%	7.3%
Grade 1	2,081	43.0%	29.7%	21.0%	6.2%
Grade 2	2,112	47.7%	28.4%	18.4%	5.5%
Grade 3	2,061	48.5%	28.5%	16.8%	6.2%
Grade 4	1,937	50.6%	28.7%	16.0%	4.8%
Grade 5	1,919	52.7%	26.7%	16.1%	4.5%
Grade 6	1,748	47.9%	26.3%	19.4%	6.4%
Grade 7	1,493	41.9%	27.9%	21.1%	9.0%
Grade 8	1,753	43.0%	26.6%	21.0%	9.4%
Grade 9	2,161	28.2%	19.8%	21.0%	31.0%
Grade 10	1,769	28.8%	24.1%	22.4%	24.6%
Grade 11	1,429	31.9%	23.9%	23.1%	21.1%
Grade 12	1,552	24.9%	26.4%	31.4%	17.4%

E2: Percent of students chronically absent by subgroup SY11-12

Subgroup		Elementary		Middle		High		District	
		% Chronic (≥ 10%)	N	% Chronic (≥ 10%)	N	% Chronic (≥ 10%)	N	% Chronic (≥ 10%)	N
Sex	Female	24.2%	5,832	28.1%	2,415	48.5%	3,402	32.1%	11,649
	Male	25.0%	6,390	29.3%	2,579	48.3%	3,509	32.4%	12,478
Race	Hispanic	24.4%	7,890	30.0%	3,190	51.0%	4,277	33.0%	15,357
	Black	22.1%	2,109	25.1%	904	46.4%	1,352	30.3%	4,365
	White	30.1%	1,028	28.5%	473	40.9%	656	33.0%	2,157
	Asian	18.3%	650	23.5%	238	38.4%	427	25.8%	1,315
	Multi Racial	32.4%	413	26.9%	119	51.0%	149	35.5%	681
	Native Am./Pacific Isl.	44.7%	132	37.1%	70	56.0%	50	44.8%	252
Lunch Status	Free Lunch	25.7%	10,511	31.2%	4,158	50.9%	5,344	33.6%	20,013
	Reduced Lunch	8.3%	575	10.6%	274	30.2%	454	16.4%	1,303
	Paid Lunch	23.2%	1,136	19.0%	562	43.6%	1,113	30.4%	2,811
EL Status	Non-EL	26.3%	9,707	29.1%	4,330	48.6%	6,033	33.6%	20,070
	EL	18.1%	2,515	25.9%	664	46.8%	878	25.6%	4,057
IEP Status	Non-IEP	23.8%	10,448	26.1%	4,123	45.8%	5,793	30.5%	20,364
	IEP	29.7%	1,774	41.2%	871	61.5%	1,118	41.8%	3,763

E3: Absenteeism rates by school SY11-12

School/Level/Grade	Total Enrollment*	Low 0 to < 5%	Moderate 5 to < 10%	Chronic 10 to < 20%	Excessive ≥ 20%
	N	%	%	%	%
ALFRED LIMA	691	48.5%	27.4%	17.9%	6.2%
ALFRED LIMA ANNEX	271	56.8%	30.3%	9.2%	3.7%
ANTHONY CARNEVALE	658	46.7%	28.9%	17.6%	6.8%
ASA MESSER ELEM	678	44.8%	27.6%	19.8%	7.8%
BIRCH VOCATIONAL	82	51.2%	18.3%	17.1%	13.4%
CARL G LAURO	1,105	42.5%	26.2%	19.4%	11.9%
CENTRAL	1,240	20.6%	20.6%	26.0%	32.8%
CHARLES FORTES	338	40.2%	29.0%	22.5%	8.3%
CLASSICAL	1,113	51.0%	29.6%	14.7%	4.7%
DELSESTO MIDDLE	1,046	37.9%	24.5%	25.5%	12.1%
E-CUBED ACADEMY	415	31.8%	24.3%	21.2%	22.7%
ESEK HOPKINS	638	40.4%	23.4%	21.3%	14.9%
FEINSTEIN (BROAD)	510	44.9%	31.6%	18.8%	4.7%
FEINSTEIN (SACKETT)	508	49.8%	25.0%	20.3%	4.9%
FRANK SPAZIANO	696	55.0%	27.0%	13.8%	4.2%
GEORGE J WEST	860	45.6%	26.9%	20.8%	6.7%
GILBERT STUART	900	36.4%	25.9%	23.4%	14.2%
HARRY KIZIRIAN	743	41.5%	27.2%	21.0%	10.4%
HOPE	1,231	20.4%	18.3%	25.6%	35.7%
HSTA & PAIS HIGH	796	25.8%	22.2%	26.6%	25.4%
JORGE ALVAREZ HIGH	674	15.7%	19.4%	28.5%	36.4%
MARTIN LUTHER KING	647	45.6%	28.7%	21.0%	4.6%
MARY E FOGARTY	564	39.4%	28.2%	22.7%	9.8%
MOUNT PLEASANT HIGH	1,170	20.2%	21.1%	23.5%	35.2%
NATHAN BISHOP	761	46.3%	27.7%	18.7%	7.4%
NATHANAEL GREENE	1,033	45.9%	29.4%	18.2%	6.5%
PLEASANT VIEW	338	37.6%	29.9%	21.6%	10.9%
PROV CAREER AND TECH	516	31.2%	25.2%	26.2%	17.4%
RESERVOIR AVENUE	332	52.1%	31.3%	15.1%	1.5%
ROBERT F KENNEDY	567	52.9%	31.2%	12.7%	3.2%
ROBERT L BAILEY	546	42.3%	28.9%	22.7%	6.0%
ROGER WILLIAMS	910	34.7%	22.9%	26.4%	16.0%
VARTAN GREGORIAN	383	59.5%	26.4%	8.6%	5.5%
VEAZIE STREET	760	38.0%	27.1%	25.3%	9.6%
WEBSTER AVENUE	417	54.7%	25.7%	14.4%	5.3%
WILLIAM DABATE MEMOR	452	57.1%	22.1%	15.7%	5.1%
WOODS & YOUNG ELEM	816	37.1%	29.0%	25.1%	8.7%

F: Absenteeism Rates SY12-13

F1: Absenteeism rates by school level and grade SY12-13

School/Level/Grade	Total Enrollment*	Low 0 to < 5%	Moderate 5 to < 10%	Chronic 10 to < 20%	Excessive ≥ 20%
	N	%	%	%	%
District	24,026	39.5%	28.2%	21.2%	11.0%
Elementary	12,315	43.5%	30.4%	20.1%	5.9%
Middle	4,950	43.4%	28.0%	20.8%	7.8%
High	6,761	29.4%	24.3%	23.6%	22.7%
Kindergarten	2,216	33.4%	31.0%	25.5%	10.1%
Grade 1	2,157	40.8%	31.6%	21.7%	5.8%
Grade 2	2,045	45.6%	29.9%	19.3%	5.2%
Grade 3	2,040	47.8%	28.9%	18.8%	4.5%
Grade 4	1,957	47.2%	31.2%	16.6%	5.1%
Grade 5	1,900	47.7%	29.9%	18.0%	4.4%
Grade 6	1,879	48.2%	26.9%	19.1%	5.7%
Grade 7	1,627	41.3%	27.6%	23.0%	8.1%
Grade 8	1,444	39.5%	29.9%	20.4%	10.1%
Grade 9	2,148	30.3%	21.6%	20.2%	27.9%
Grade 10	1,676	29.7%	24.4%	22.0%	23.9%
Grade 11	1,492	28.9%	25.5%	26.1%	19.5%
Grade 12	1,445	28.4%	26.9%	27.8%	17.0%

F2: Percent of students chronically absent by subgroup SY12-13

Subgroup		Elementary		Middle		High		District	
		% Chronic (≥ 10%)	N	% Chronic (≥ 10%)	N	% Chronic (≥ 10%)	N	% Chronic (≥ 10%)	N
Sex	Female	25.4%	5,919	27.1%	2,346	47.6%	3,314	32.1%	11,579
	Male	26.7%	6,396	29.9%	2,604	45.1%	3,447	32.4%	12,447
Race	Hispanic	25.7%	8,039	29.6%	3,194	50.0%	4,206	33.1%	15,439
	Black	24.5%	2,067	23.5%	908	41.0%	1,284	29.2%	4,259
	White	30.7%	1,014	28.8%	444	38.1%	636	32.5%	2,094
	Asian	18.1%	620	21.6%	218	36.3%	408	24.6%	1,246
	Multi Racial	34.0%	447	42.0%	131	51.8%	164	39.4%	742
	Native Am./Pacific Isl.	43.8%	128	45.5%	55	46.0%	63	44.7%	246
Lunch Status	Free Lunch	27.4%	10,661	30.5%	4,119	48.7%	5,109	33.5%	19,889
	Reduced Lunch	10.0%	602	11.2%	268	22.8%	452	14.6%	1,322
	Paid Lunch	21.1%	1,052	22.9%	563	45.2%	1,200	31.7%	2,815
EL Status	Non-EL	27.9%	9,646	29.4%	4,204	47.0%	5,802	33.8%	19,625
	EL	19.5%	2,669	23.9%	746	42.0%	959	25.2%	4,374
IEP Status	Non-IEP	25.1%	10,568	26.3%	4,108	44.0%	5,583	30.5%	20,259
	IEP	31.9%	1,747	39.7%	842	57.3%	1,178	41.6%	3,767

F3: Absenteeism rates by school SY12-13

School/Level/Grade	Total Enrollment*	Low 0 to < 5%	Moderate 5 to < 10%	Chronic 10 to < 20%	Excessive ≥ 20%
	N	%	%	%	%
ALFRED LIMA	678	42.8%	30.7%	20.1%	6.5%
ANTHONY CARNEVALE	645	44.8%	31.2%	18.3%	5.7%
ASA MESSER ELEM	697	40.7%	30.7%	21.8%	6.7%
BIRCH VOCATIONAL	97	52.6%	19.6%	20.6%	7.2%
CARL G LAURO	1,061	40.0%	27.8%	21.4%	10.8%
CENTRAL	1,195	17.3%	21.0%	28.7%	33.0%
CHARLES FORTES	402	31.1%	27.1%	24.6%	17.2%
CLASSICAL	1,118	50.8%	29.9%	14.4%	4.9%
DELSESTO MIDDLE	1,053	33.5%	27.0%	25.9%	13.6%
E-CUBED ACADEMY	370	20.3%	29.7%	27.6%	22.4%
ESEK HOPKINS	640	38.4%	26.6%	25.0%	10.0%
FEINSTEIN (BROAD)	513	40.4%	31.6%	22.2%	5.8%
FEINSTEIN (SACKETT)	499	43.5%	33.7%	18.8%	4.0%
FRANK SPAZIANO	721	52.0%	30.9%	13.0%	4.0%
GEORGE J WEST	899	42.4%	31.4%	19.6%	6.7%
GILBERT STUART	828	40.6%	26.3%	22.2%	10.9%
HARRY KIZIRIAN	686	35.0%	30.6%	26.4%	8.0%
HOPE HIGH	1,213	23.3%	19.9%	23.6%	33.2%
HSTA & PAIS HIGH	761	28.6%	21.9%	23.9%	25.5%
JORGE ALVAREZ HIGH	664	21.8%	20.2%	23.9%	34.0%
LEVITON DUAL LANG	279	64.2%	28.0%	5.7%	2.2%
MARTIN LUTHER KING	624	43.6%	29.2%	20.8%	6.4%
MARY E FOGARTY	545	41.8%	31.2%	19.8%	7.2%
MOUNT PLEASANT HIGH	1,052	29.4%	21.4%	23.6%	25.7%
NATHAN BISHOP	752	47.6%	27.7%	15.0%	9.7%
NATHANAEL GREENE	1,052	45.2%	26.2%	20.3%	8.3%
PLEASANT VIEW	336	40.2%	30.4%	22.3%	7.1%
PROV CAREER AND TECH	587	27.8%	24.9%	25.6%	21.8%
RESERVOIR AVENUE	333	50.2%	32.4%	14.7%	2.7%
ROBERT F KENNEDY	564	48.0%	29.8%	18.1%	4.1%
ROBERT L BAILEY	539	37.3%	31.5%	25.4%	5.8%
ROGER WILLIAMS	852	36.6%	29.3%	21.8%	12.2%
VARTAN GREGORIAN	397	55.7%	30.5%	9.6%	4.3%
VEAZIE STREET	724	37.2%	29.4%	24.3%	9.1%
WEBSTER AVENUE	427	45.9%	27.6%	20.4%	6.1%
WILLIAM DABATE MEMOR	436	54.4%	28.0%	14.4%	3.2%
WOODS & YOUNG ELEM	839	34.9%	28.2%	25.9%	11.0%

G: Absenteeism Rates SY13-14

G1: Absenteeism rates by school level and grade SY13-14

School/Level/Grade	Total Enrollment*	Low 0 to < 5%	Moderate 5 to < 10%	Chronic 10 to < 20%	Excessive ≥ 20%
	N	%	%	%	%
District	24,095	41.3%	28.0%	20.4%	10.3%
Elementary	12,303	45.0%	30.0%	19.0%	6.0%
Middle	5,302	46.5%	27.8%	19.6%	6.2%
High	6,490	30.1%	24.3%	23.8%	21.8%
Kindergarten	2,189	37.0%	30.5%	23.9%	8.6%
Grade 1	2,124	42.7%	30.5%	20.0%	6.9%
Grade 2	2,085	46.7%	29.9%	18.0%	5.5%
Grade 3	1,969	47.6%	31.3%	16.8%	4.3%
Grade 4	2,025	49.6%	28.9%	16.5%	4.9%
Grade 5	1,911	47.7%	28.7%	18.3%	5.3%
Grade 6	1,882	48.0%	28.3%	18.4%	5.3%
Grade 7	1,834	45.9%	28.1%	19.6%	6.4%
Grade 8	1,586	45.2%	26.9%	21.1%	6.9%
Grade 9	1,905	32.0%	21.7%	20.0%	26.4%
Grade 10	1,753	33.5%	23.6%	21.8%	21.1%
Grade 11	1,419	27.1%	26.6%	26.3%	20.1%
Grade 12	1,413	26.4%	26.3%	29.1%	18.3%

G2: Percent of Students Chronically Absent by Subgroup SY13-14

Subgroup		Elementary		Middle		High		District	
		% Chronic (≥ 10%)	N	% Chronic (≥ 10%)	N	% Chronic (≥ 10%)	N	% Chronic (≥ 10%)	N
Sex	Female	23.7%	6009	24.2%	2,487	46.5%	3,069	29.8%	11,565
	Male	26.2%	6294	27.2%	2,815	44.9%	3,421	31.5%	12,530
Race	Hispanic	25.1%	8,085	26.5%	3,470	48.9%	4,066	31.6%	15,621
	Black	22.8%	2,052	21.1%	915	40.8%	1,195	27.6%	4,162
	White	28.0%	997	28.9%	457	36.7%	626	30.8%	2,080
	Asian	17.8%	585	14.2%	267	38.1%	378	23.3%	1,230
	Multi Racial	30.2%	470	41.8%	134	46.0%	161	35.6%	765
	Native Am./Pacific Isl.	47.4%	114	49.2%	59	57.8%	64	50.6%	237
Lunch Status	Free Lunch	26.3%	10,526	27.9%	4,436	48.6%	4,884	32.1%	19,846
	Reduced Lunch	8.8%	604	11.4%	297	24.8%	451	14.7%	1,352
	Paid Lunch	21.5%	1,173	16.5%	569	41.3%	1,155	28.4%	2,897
EL Status	Non-EL	26.8%	9,561	26.7%	4,465	47.1%	5,442	32.4%	19,468
	EL	18.7%	2,742	20.9%	837	38.3%	1,048	23.6%	4,627
IEP Status	Non-IEP	23.9%	10,637	22.6%	4,420	43.3%	5,400	28.7%	20,457
	IEP	31.8%	1,666	41.7%	882	57.2%	1,090	41.8%	3,638

G3: Absenteeism rates by schools SY13-14

School	Total Enrollment*	Low 0 to < 5%	Moderate 5 to < 10%	Chronic 10 to < 20%	Excessive ≥ 20%
	N	%	%	%	%
ALFRED LIMA	634	46.5%	29.3%	18.9%	5.2%
ANTHONY CARNEVALE	664	46.8%	26.2%	18.2%	8.7%
ASA MESSER ELEM	692	45.2%	29.8%	17.3%	7.7%
CARL G LAURO	1,080	41.1%	28.5%	21.3%	9.1%
CENTRAL	1,222	17.9%	21.7%	25.1%	35.3%
CHARLES FORTES	396	30.1%	34.1%	21.2%	14.6%
CLASSICAL	1,125	49.7%	28.9%	16.9%	4.5%
DELSESTO MIDDLE	1,077	36.4%	26.6%	22.4%	14.7%
E-CUBED ACADEMY	390	30.3%	24.6%	25.1%	20.0%
ESEK HOPKINS	718	37.5%	24.4%	27.2%	11.0%
FEINSTEIN (BROAD)	514	44.6%	31.7%	18.1%	5.6%
FEINSTEIN (SACKETT)	505	44.6%	30.5%	19.2%	5.7%
FRANK SPAZIANO	720	49.2%	32.5%	15.3%	3.1%
GEORGE J WEST	952	42.6%	26.2%	22.1%	9.1%
GILBERT STUART	1,030	41.0%	26.6%	21.2%	11.3%
HARRY KIZIRIAN	696	38.4%	33.6%	20.4%	7.6%
HOPE HIGH	1,058	21.8%	20.3%	25.6%	32.2%
HSTA & PAIS HIGH	744	23.8%	22.4%	24.7%	29.0%
JORGE ALVAREZ HIGH	572	21.0%	23.1%	25.7%	30.2%
LEVITON DUAL LANG	285	63.5%	23.9%	10.5%	2.1%
MARTIN LUTHER KING	600	43.5%	29.5%	22.7%	4.3%
MARY E FOGARTY	571	42.7%	25.4%	24.0%	7.9%
MOUNT PLEASANT HIGH	1,036	36.6%	21.0%	23.1%	19.3%
NATHAN BISHOP	807	47.7%	29.5%	15.9%	6.9%
NATHANAEL GREENE	1,092	50.4%	25.3%	17.8%	6.6%
PLEASANT VIEW	321	35.8%	31.8%	24.6%	7.8%
PROV CAREER AND TECH	598	24.4%	28.6%	29.1%	17.9%
RESERVOIR AVENUE	334	56.0%	30.5%	12.3%	1.2%
ROBERT F KENNEDY	545	47.2%	31.0%	16.1%	5.7%
ROBERT L BAILEY	526	41.3%	28.3%	26.2%	4.2%
ROGER WILLIAMS	911	41.6%	26.0%	22.7%	9.7%
VARTAN GREGORIAN	402	61.4%	24.1%	10.2%	4.2%
VEAZIE STREET	716	39.5%	28.4%	21.5%	10.6%
WEBSTER AVENUE	426	49.8%	30.0%	15.7%	4.5%
WILLIAM DABATE MEMOR	439	58.8%	25.3%	11.8%	4.1%
WOODS & YOUNG ELEM	805	37.1%	31.4%	21.9%	9.6%

Note: Birch Vocational school is not included; the school was closed in the last school year.

H: Absenteeism Rates SY14-15

H1: Absenteeism rates by school level and grade SY14-15						
School/Level/Grade	Total Enrollment*	Low 0 to < 5%	Moderate 5 to < 10%	Chronic 10 to < 20%	Excessive ≥ 20%	Chronic or Excessive ≥10%
	N	%	%	%	%	%
District	25,411	38.2%	27.2%	21.1%	13.5%	34.7%
Elementary	12,572	43.4%	28.8%	20.3%	7.5%	27.8%
Middle	5,847	40.1%	27.2%	20.2%	12.4%	32.7%
High	6,992	27.1%	24.2%	23.3%	25.4%	48.7%*
Kindergarten	2,066	32.2%	30.4%	26.7%	10.7%	37.4%
Grade 1	2,244	40.8%	28.8%	20.9%	9.5%	30.4%
Grade 2	2,166	43.9%	29.1%	20.7%	6.3%	27.0%
Grade 3	2,103	45.9%	28.9%	19.2%	5.9%	25.2%
Grade 4	2,023	49.0%	28.3%	16.1%	6.6%	22.7%
Grade 5	2,029	49.0%	27.3%	18.0%	5.7%	23.7%
Grade 6	1,990	41.8%	29.0%	18.2%	11.0%	29.2%
Grade 7	1,923	38.9%	27.0%	21.1%	13.0%	34.1%
Grade 8	1,875	39.7%	25.3%	21.4%	13.5%	35.0%
Grade 9	2,144	31.7%	24.4%	19.4%	24.5%	43.9%
Grade 10	1,712	25.1%	24.6%	23.0%	27.4%	50.4%
Grade 11	1,603	24.5%	24.3%	27.0%	24.1%	51.2%
Grade 12	1,533	25.4%	23.5%	25.4%	25.7%	51.1%

*Note: In presentations delivered in August and September 2016, chronic absence data at the High-level was reported as 50% not 49%. The percentages reported in Table H1 are corrected as of October 2016.

H2: Percent of Students Chronically Absent by Subgroup SY14-15									
Subgroup		Elementary		Middle		High		District	
		% Chronic (≥ 10%)	N	% Chronic (≥ 10%)	N	% Chronic (≥ 10%)	N	% Chronic (≥ 10%)	N
Sex	Female	26.7%	6,124	30.2%	2,734	50.0%	3,279	33.8%	12,137
	Male	28.8%	6,448	34.8%	3,113	47.6%	3,713	35.5%	13,274
Race	Hispanic	27.4%	8,095	33.0%	3,750	50.9%	4,442	35.1%	16,287
	Black	24.1%	2,100	29.5%	1,023	43.1%	1,245	30.8%	4,368
	White	34.0%	1,102	37.0%	527	44.3%	680	37.7%	2,309
	Asian	23.6%	588	21.6%	315	42.9%	354	28.6%	1,257
	Multi Racial	34.6%	540	42.7%	171	54.6%	194	40.4%	905
	Native Am./Pacific Isl.	43.5%	147	54.1%	61	63.6%	77	51.2%	285
Lunch Status	Free Lunch	29.2%	10,398	35.2%	4,757	51.5%	5,147	36.3%	20,302
	Reduced Lunch	16.0%	642	17.8%	314	31.2%	516	21.7%	1,472
	Paid Lunch	23.2%	1,532	23.1%	776	44.6%	1,329	31.0%	3,637
LEP Status	Non-EL	30.0%	8,613	34.4%	4,346	49.4%	5,525	36.9%	18,484
	EL	22.8%	3,959	27.5%	1,501	46.1%	1,467	28.8%	6,927
IEP Status	Non-IEP	26.5%	10,801	29.7%	4,874	47.4%	5,877	32.9%	21,552
	IEP	35.7%	1,771	47.3%	973	55.7%	1,115	44.4%	3,859

H3: Absenteeism rates by schools SY14-15

School/Level/Grade	Total Enrollment *	Low 0 to < 5%	Moderate 5 to < 10%	Chronic 10 to < 20%	Excessive ≥ 20%	Chronic or Excessive ≥10%
Elementary	N	%	%	%	%	%
Alan Shawn Feinstein (Broad)	599	43.2%	27.7%	19.7%	9.3%	29.0%
Alfred Lima	687	43.2%	26.9%	21.7%	8.2%	29.8%
Anthony Carnevale	613	43.2%	27.6%	18.3%	10.9%	29.2%
Asa Messer	581	42.9%	26.2%	19.8%	11.2%	31.0%
Carl G. Lauro	1,048	40.9%	27.3%	22.3%	9.4%	31.8%
Charles Fortes	334	28.1%	32.0%	27.5%	12.3%	39.8%
Dr. Martin Luther King Jr.	601	39.1%	27.1%	25.5%	8.3%	33.8%
Frank Spaziano	724	51.1%	25.1%	17.0%	6.8%	23.8%
George J. West	925	43.6%	30.5%	18.3%	7.7%	25.9%
Harry Kizirian	697	34.4%	30.7%	24.1%	10.8%	34.9%
Leviton Dual Language	300	58.0%	27.3%	11.0%	3.7%	14.7%
Lillian Feinstein (Sackett)	503	43.1%	29.0%	20.3%	7.6%	27.8%
Mary Fogarty	565	38.4%	29.9%	22.8%	8.8%	31.7%
Pleasant View	330	37.6%	31.8%	21.8%	8.8%	30.6%
Reservoir Avenue	335	49.3%	34.0%	14.3%	2.4%	16.7%
Robert F. Kennedy	535	46.9%	29.9%	19.1%	4.1%	23.2%
Robert L. Bailey	507	35.5%	30.4%	23.3%	10.8%	34.1%
Times2 Elementary [†]	381	68.2%	20.7%	9.2%	1.8%	11.0%
Vartan Gregorian	444	52.5%	25.0%	15.3%	7.2%	22.5%
Veazie Street	723	39.1%	27.7%	22.8%	10.4%	33.2%
Webster Avenue	437	48.5%	25.4%	19.9%	6.2%	26.1%
William D'Abate	428	57.9%	25.0%	14.0%	3.0%	17.1%
Woods/Young	824	40.9%	32.0%	20.1%	6.9%	27.1%
Middle	N	%	%	%	%	%
Del Sesto	1,054	37.4%	25.3%	21.6%	15.7%	37.3%
Esek Hopkins [†]	665	32.6%	24.7%	26.0%	16.7%	42.7%
Gilbert Stuart	1,073	40.4%	26.6%	20.6%	12.4%	33.0%
Nathan Bishop	791	41.5%	26.9%	18.5%	13.1%	31.6%
Nathanael Greene	1,085	42.1%	25.3%	18.2%	14.4%	32.5%
Roger Williams	992	33.9%	28.8%	21.8%	15.5%	37.3%
Times2 Middle [†]	128	85.2%	14.1%	0.8%	0.0%	0.8%
West Broadway	382	49.7%	29.1%	14.1%	7.1%	21.2%
High	N	%	%	%	%	%
360 High School	NA	NA	NA	NA	NA	NA
Academy for Career Exploration [†]	209	30.1%	22.0%	29.7%	18.2%	47.8%
Central	1,262	20.0%	19.4%	26.1%	34.5%	60.6%
Classical	1,136	38.9%	34.1%	19.2%	7.8%	27.0%
Dr. Jorge Alvarez	544	27.9%	23.0%	22.1%	27.0%	49.1%
E Cubed Academy	423	32.9%	22.7%	22.9%	21.5%	44.4%
Evolutions	NA	NA	NA	NA	NA	NA
Hope	952	18.2%	20.0%	20.8%	41.1%	61.9%
JSEC	828	26.2%	19.4%	25.1%	29.2%	54.3%
Mount Pleasant	1,067	30.2%	21.5%	22.2%	26.1%	48.4%
Providence Career and Technical	661	19.8%	29.3%	28.7%	22.1%	50.8%
Times2 High [†]	151	73.5%	18.5%	4.0%	4.0%	7.9%
<i>Aventure</i>	64	26.6%	7.8%	21.9%	43.8%	65.6%

[†]Esek Hopkins, Academy for Career Exploration, and Times 2 school's collection of attendance data may have been inconsistent with other district schools' collection methods resulting in overall attendance and chronic absenteeism rates that were higher or lower than expected.

I: Absenteeism Rates SY15-16

I1: Absenteeism rates by school level and grade SY15-16						
School/Level/Grade	Total Enrollment*	Low 0 to < 5%	Moderate 5 to < 10%	Chronic 10 to < 20%	Excessive ≥ 20%	Chronic or Excessive ≥10%
	N	%	%	%	%	%
District	25,392	40.0%	27.5%	20.2%	12.3%	32.5%*
Elementary	12,317	46.3%	30.2%	18.1%	5.4%	23.4%
Middle	5,874	41.1%	27.4%	20.4%	11.1%	31.5%
High	7,201	28.2%	23.0%	23.6%	25.3%	48.8%*
Kindergarten	1,984	36.8%	33.3%	22.2%	7.7%	29.9%
Grade 1	1,973	44.2%	29.5%	19.9%	6.3%	26.2%
Grade 2	2,236	46.7%	30.2%	18.4%	4.7%	23.0%
Grade 3	2,119	48.4%	28.7%	18.4%	4.5%	22.9%
Grade 4	2,083	50.9%	30.2%	14.6%	4.3%	18.9%
Grade 5	1,976	50.4%	29.3%	15.3%	5.0%	20.3%
Grade 6	2,028	46.5%	26.3%	19.4%	7.8%	27.2%
Grade 7	1,896	38.3%	27.4%	21.3%	13.0%	34.2%
Grade 8	1,896	38.0%	28.7%	20.6%	12.8%	33.4%
Grade 9	2,401	31.6%	21.1%	20.7%	26.6%	47.3%
Grade 10	1,785	29.3%	24.7%	21.8%	24.2%	46.0%
Grade 11	1,435	24.3%	24.6%	23.5%	27.5%	51.1%
Grade 12	1,580	25.3%	22.3%	29.9%	22.5%	52.4%

*Note: In presentations delivered in August and September 2016, chronic absence data at the District-level was reported as 31% not 33%; and High-level was reported as 44% not 49%. The percentages reported in Table I1 are corrected as of October 2016.

I2: Percent of Students Chronically Absent by Subgroup SY15-16									
Subgroup		Elementary		Middle		High		District	
		% Chronic (≥ 10%)	N	% Chronic (≥ 10%)	N	% Chronic (≥ 10%)	N	% Chronic (≥ 10%)	N
Sex	Female	22.7%	5,960	30.3%	2,777	47.7%	3,360	31.4%	12,097
	Male	24.2%	6,354	32.6%	3,101	49.8%	3,840	33.6%	13,295
Race	Hispanic	23.0%	7,755	32.1%	3,767	51.3%	4,682	33.3%	16,204
	Black	19.7%	2,068	28.6%	1,018	41.8%	1,264	28.2%	4,350
	White	29.0%	1,164	37.3%	531	42.3%	620	34.4%	2,315
	Asian	20.3%	577	18.8%	309	42.2%	351	26.1%	1,237
	Multi Racial	29.5%	580	34.0%	200	65.0%	203	37.7%	983
	Native Am./Pacific Isl.	39.4%	170	52.8%	53	52.5%	80	45.2%	303
Lunch Status	Free Lunch	25.1%	10,257	34.1%	4,588	51.9%	5,327	34.3%	20,172
	Reduced Lunch	8.8%	637	17.9%	280	31.0%	565	19.0%	1,482
	Paid Lunch	17.7%	1,420	23.6%	1,010	43.9%	1,308	28.5%	3,738
LEP Status	Non-EL	25.1%	8,178	32.7%	4,456	47.9%	5,455	33.9%	18,089
	EL	20.1%	4,136	27.7%	1,422	51.6%	1,745	29.1%	7,303
IEP Status	Non-IEP	22.2%	10,769	28.9%	4,931	47.6%	6,259	30.9%	21,959
	IEP	32.1%	1,545	45.2%	947	57.0%	941	42.5%	3,433

I3: Absenteeism rates by school SY15-16

School/Level/Grade	Total Enrollment*	Low 0 to < 5%	Moderate 5 to < 10%	Chronic 10 to < 20%	Excessive ≥ 20%	Chronic or Excessive ≥10%
Elementary	N	%	%	%	%	%
Alan Shawn Feinstein (Broad)	517	46.4%	30.9%	16.6%	6.0%	22.6%
Alfred Lima	637	43.3%	30.0%	20.3%	6.4%	26.7%
Anthony Carnevale	587	45.0%	30.7%	16.5%	7.8%	24.4%
Asa Messer	587	44.0%	25.2%	22.3%	8.5%	30.8%
Carl G. Lauro	1,056	43.5%	28.5%	21.7%	6.3%	28.0%
Charles Fortes	300	38.3%	31.3%	23.0%	7.3%	30.3%
Dr. Martin Luther King Jr.	632	45.3%	31.0%	18.4%	5.4%	23.7%
Frank Spaziano	720	52.2%	27.5%	16.9%	3.3%	20.3%
George J. West	938	44.9%	28.4%	19.9%	6.8%	26.8%
Harry Kizirian	708	38.7%	32.9%	21.9%	6.5%	28.4%
Leviton Dual Language	302	50.7%	32.8%	14.9%	1.7%	16.6%
Lillian Feinstein (Sackett)	504	49.8%	30.4%	14.1%	5.8%	19.8%
Mary Fogarty	549	44.4%	31.1%	16.4%	8.0%	24.4%
Pleasant View	323	44.3%	31.3%	19.8%	4.6%	24.5%
Reservoir Avenue	329	53.2%	30.7%	12.5%	3.6%	16.1%
Robert F. Kennedy	514	51.4%	29.6%	14.0%	5.1%	19.1%
Robert L. Bailey	494	43.3%	30.6%	18.6%	7.5%	26.1%
Times2 Elementary [†]	411	68.9%	23.4%	7.1%	0.7%	7.8%
Vartan Gregorian	436	55.3%	25.5%	14.7%	4.6%	19.3%
Veazie Street	688	37.2%	33.4%	20.8%	8.6%	29.4%
Webster Avenue	431	48.3%	26.5%	18.8%	6.5%	25.3%
William D'Abate	440	61.1%	20.9%	13.6%	4.3%	18.0%
Woods/Young	788	43.5%	31.5%	19.0%	6.0%	25.0%
Middle	N	%	%	%	%	%
Del Sesto	1,060	40.1%	25.0%	22.5%	12.5%	34.9%
Esek Hopkins	664	37.8%	24.2%	25.3%	12.7%	38.0%
Gilbert Stuart	1,038	36.6%	26.7%	22.9%	13.8%	36.7%
Nathan Bishop	778	38.7%	28.4%	21.3%	11.6%	32.9%
Nathanael Greene	1,068	46.5%	24.3%	16.9%	12.2%	29.1%
Roger Williams	985	33.7%	30.1%	20.6%	15.6%	36.2%
Times2 Middle [†]	140	75.0%	18.6%	2.9%	3.6%	6.4%
West Broadway	504	46.6%	27.0%	14.7%	11.7%	26.4%
High	N	%	%	%	%	%
360 High School	89	28.1%	23.6%	18.0%	30.3%	48.3%
Academy for Career Exploration [†]	219	51.1%	24.2%	16.9%	7.8%	24.7%
Central	1,262	19.3%	18.7%	25.8%	36.2%	62.0%
Classical	1,152	50.2%	27.5%	17.2%	5.1%	22.3%
Dr. Jorge Alvarez	507	25.0%	23.5%	25.05%	26.43%	51.5%
E Cubed Academy	431	36.7%	21.3%	19.0%	23.0%	42.0%
Evolutions	112	17.0%	25.0%	25.0%	33.0%	58.0%
Hope	923	15.8%	19.1%	23.6%	41.5%	65.1%
JSEC	878	16.7%	19.4%	24.8%	39.1%	63.9%
Mount Pleasant	1,078	26.7%	22.4%	23.6%	27.4%	50.9%
Providence Career and Technical	713	26.9%	26.9%	28.5%	17.7%	46.1%
Times2 High [†]	157	60.5%	25.5%	6.4%	7.6%	14.0%
<i>Aventure</i>	89	48.3%	3.4%	20.2%	28.1%	48.3%

[†]Academy for Career Exploration and Times2 school's collection of attendance data may have been inconsistent with other district schools' collection methods resulting in overall attendance and chronic absenteeism rates that were higher or lower than expected.